



**TRANSPORTATION CABINET**

Frankfort, Kentucky 40622  
www.transportation.ky.gov/

**Steven L. Beshear**  
Governor

**Michael W. Hancock, P.E.**  
Secretary

November 19, 2015

CALL NO. 300  
CONTRACT ID NO. 151265  
ADDENDUM # 4

Subject: Bullitt County, 121GR15D075-FD04  
Letting November 20, 2015

- (1) Revised - Plan Sheets
- (2) Revised - Bid Items - Pages 644-653 of 653

Proposal revisions are available at <http://transportation.ky.gov/Construction-Procurement/>.

Plan revisions are available at <http://www.lynnimaging.com/kytransportation/>.

If you have any questions, please contact us at 502-564-3500.

Sincerely,

A handwritten signature in cursive script that reads "Rachel Mills".

Rachel Mills, P.E.  
Director  
Division of Construction Procurement

RM:ks  
Enclosures



An Equal Opportunity Employer M/F/D

TRANSPORTATION CABINET  
DEPARTMENT OF HIGHWAYS

# BULLITT COUNTY

## KY 61 OVER

### I-65

## Station 165+03.73

ESTIMATE OF QUANTITIES

ITEM NUMBER		8100	8104	8150	8151	8003	2231	8635	8046	8033	3299	2998	8039	8269	8018	8002	2731	21532ED		8269
BID ITEM		CONC. CLASS "A"	CONC. CLASS "AA"	STEEL REINF.	STL. REINF. EPOXY COATED	FOUNDATION PREPARATION	STRUCTURE GRANULAR BACKFILL	PPC I-BEAM TYPE VI	STEEL PILES (HP12x53)	TEST PILES (HP12x53)	ARMORED EDGE	MASONRY COATING	PRE DRILLING PILES	ELECTRICAL CONDUIT 3"	RETAINING WALL	STRUCTURAL EXCAVATION SOLID ROCK	REMOVE EXISTING RETAINING WALL	TYPE 3 RAILING	TEMP CONDUIT	ELECTRICAL CONDUIT 4"
UNIT		CU. YD.	CU. YD.	lbs.	lbs.	L.S.	CU. YD.	FT.	FT.	FT.	FT.	SQ. FT.	FT.	L.S.	SQ. FT.	CU. YD.	L.S.	FT.	L.S.	L.S.
SUBSTRUCTURE	SEMI-INTEGRAL END BENT 1	30.1	8.0	3,468	754		86		301	29.5		60	104			75				
	PIER	72.5		18,750		1						127								
	SEMI-INTEGRAL END BENT 2	30.1	8.0	3,468	754		86		281	29.5		60	104							
SUPERSTRUCTURE			425.2		98,749			1,262.5			102.7	996		④				511.5	1	⑤
MSE WALLS							995								4,112		1			
BRIDGE TOTALS		132.7	441.2	25,686	100,257	1	1,167	1,262.5	582	59.0	102.7	1,243	208	④	4,112	75	1	511.5	1	⑤

- ④ Approximate length of 3" Electrical conduit is 256 feet.  
⑤ Approximate length of 4" Electrical conduit is 256 feet.

Note: Bridge plans are detailed using English dimensions. Roadway plans are metric and will be constructed using metric dimensions.

INDEX OF SHEETS

Sheet No.	Description
S1	Title Sheet
S2	General Notes
S3	Layout
S4	Soundings
S5	Foundation Layout
S6	Semi-Integral End Bent 1
S7	Pier
S8	Semi-Integral End Bent 2
S9	Framing Plan
S10	PCIB Type VI Details
S11	Superstructure
S12	Superstructure Details
S13	Superstructure Bar Bill
S14	Intermediate Diaphragm Details
S15	Screed Plan
S16	Construction Elevations
S17	MSE Wall at End Bent 1
S18	MSE Wall at End Bent 2
S19	MSE Wall Geotechnical Notes
S20	Type 3 Rail System

SPECIAL NOTES

Retaining Walls

SPECIAL PROVISIONS

STANDARD DRAWINGS

BBP-001-12	Elastomeric Bearing Pads for Prestressed Beams
BBP-002-04	Bearing Details
BGX-006-09	Stencils for Structures
BGX-012-02	Geotechnical Legend
BJE-001-12	Neoprene Expansion Dams and Armored Edges
BPS-003-09	HP 12 x 53 Steel Pile

SPECIFICATIONS

2012 Standard Specifications for Road and Bridge Construction  
2002 AASHTO Standard Specifications for Highway Bridges

REVISION	DATE
1 Nov. 2002	CHECKED BY: R.J.W.
DESIGNED BY: S.P.M.	DATE: June 16, 2014
DATE: June 16, 2014	DESIGNED BY: S.P.M.
DESIGNED BY: S.P.M.	DATE: June 16, 2014
DATE: June 16, 2014	DESIGNED BY: S.P.M.
DATE: June 16, 2014	DESIGNED BY: S.P.M.

Commonwealth of Kentucky  
DEPARTMENT OF HIGHWAYS

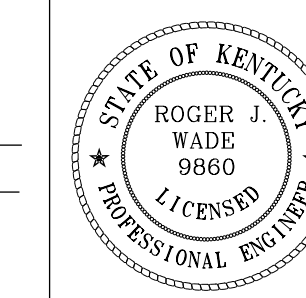
COUNTY  
**BULLITT**

ROUTE  
**KY 61**      CROSSING  
**I-65**

**TITLE SHEET**

PREPARED BY <b>Qk4</b>	SHEET NO. <b>S1</b>
1046 E. Chestnut St. Louisville, Kentucky 40204	DRAWING NO. <b>24691</b>

BY: *Roger J. Wade*  
DATE: June 16, 2014



ITEM NUMBER

**5-117.00**

TRANSPORTATION CABINET  
DEPARTMENT OF HIGHWAYS

# BULLITT COUNTY

## KY 61 OVER

### I-65

# Station 165+03.73

ESTIMATE OF QUANTITIES

ITEM NUMBER	8100	8104	8150	8151	8003	2231	8635	8046	8033	3299	2998	8039	8269	8018	8002	2731	21532ED		8269	
BID ITEM	CONC. CLASS "A"	CONC. CLASS "AA"	STEEL REINF.	STL. REINF. EPOXY COATED	FOUNDATION PREPARATION	STRUCTURE GRANULAR BACKFILL	PPC I-BEAM TYPE VI	STEEL PILES (HP12x53)	TEST PILES (HP12x53)	ARMORED EDGE	MASONRY COATING	PRE DRILLING PILES	ELECTRICAL CONDUIT 3"	RETAINING WALL	STRUCTURAL EXCAVATION SOLID ROCK	REMOVE EXISTING RETAINING WALL	TYPE 3 RAILING	TEMP CONDUIT	ELECTRICAL CONDUIT 4"	
UNIT	CU. YD.	CU. YD.	lbs.	lbs.	L.S.	CU. YD.	FT.	FT.	FT.	FT.	SQ. FT.	FT.	L.S.	SQ. FT.	CU. YD.	L.S.	FT.	L.S.	L.S.	
SUBSTRUCTURE																				
SEMI-INTEGRAL END BENT 1	30.1	8.0	3,468	754		86		301	29.5			104								
PIER	72.5		18,750		1						60				75					
SEMI-INTEGRAL END BENT 2	30.1	8.0	3,468	754		86		281	29.5			104								
SUPERSTRUCTURE		425.2		98,749			1,262.5			102.7	996		④				511.5	1	⑤	
MSE WALLS						995								4,112		1				
BRIDGE TOTALS	132.7	441.2	25,686	100,257	1	1,167	1,262.5	582	59.0	102.7	1,243	208	④	4,112	75	1	511.5	1	⑤	

- ④ Approximate length of 3" Electrical conduit is 256 feet.
- ⑤ Approximate length of 4" Electrical conduit is 256 feet.

Note: Bridge plans are detailed using English dimensions. Roadway plans are metric and will be constructed using metric dimensions.

INDEX OF SHEETS

Sheet No.	Description
S1	Title Sheet
S2	General Notes
S3	Layout
S4	Soundings
S5	Foundation Layout
S6	Semi-Integral End Bent 1
S7	Pier
S8	Semi-Integral End Bent 2
S9	Framing Plan
S10	PCIB Type VI Details
S11	Superstructure
S12	Superstructure Details
S13	Superstructure Bar Bill
S14	Intermediate Diaphragm Details
S15	Screed Plan
S16	Construction Elevations
S17	MSE Wall at End Bent 1
S18	MSE Wall at End Bent 2
S19	MSE Wall Geotechnical Notes
S20	Type 3 Rail System

SPECIAL NOTES

Retaining Walls

SPECIAL PROVISIONS

STANDARD DRAWINGS

BBP-001-12	Elastomeric Bearing Pads for Prestressed Beams
BBP-002-04	Bearing Details
BGX-006-09	Stencils for Structures
BGX-012-02	Geotechnical Legend
BJE-001-12	Neoprene Expansion Dams and Armored Edges
BPS-003-09	HP 12 x 53 Steel Pile

SPECIFICATIONS

2012 Standard Specifications for Road and Bridge Construction  
2002 AASHTO Standard Specifications for Highway Bridges

REVISION	DATE
1 Nov. 2002	CHECKED BY
DESIGNED BY: S.P.M.	R.J.W.
DETAILED BY: C.L.C.	S.P.M.

Commonwealth of Kentucky  
DEPARTMENT OF HIGHWAYS

COUNTY  
**BULLITT**

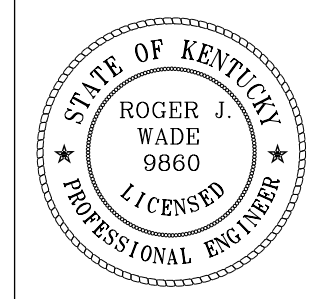
ROUTE  
**KY 61**

CROSSING  
**I-65**

TITLE SHEET

BY: *Roger J. Wade*  
DATE: June 16, 2014

ITEM NUMBER  
**5-117.00**



PREPARED BY  
**Qk4**  
1046 E. Chestnut St.  
Louisville, Kentucky 40204

SHEET NO.  
**S1**

DRAWING NO.  
**24691**

TRANSPORTATION CABINET  
DEPARTMENT OF HIGHWAYS

# BULLITT COUNTY

## KY 61 OVER

# CSX RAILROAD

## Station 128+78.05

ESTIMATE OF QUANTITIES

ITEM NUMBER	8100	8104	8150	8151	8003	2231	8635	8046	8033	3299	2998	8094	8002	21532ED	23964EC	8039
BID ITEM	CONC. CLASS "A"	CONC. CLASS "AA"	STEEL REINF.	STL. REINF. EPOXY COATED	FOUNDATION PREPARATION	GRANULAR EMBANKMENT	PPC I-BEAM TYPE VI	STEEL PILES (HP12x53)	TEST PILES (HP12x53)	ARMORED EDGE	MASONRY COATING	PILE POINTS 12"	STRUCTURE EXCAVATION SOLID ROCK	RAIL SYSTEM TYPE 3	PROTECTIVE FENCE	PRE-DRILLING FOR PILES
UNIT	CU. YD.	CU. YD.	lbs.	lbs.	L.S.	CU. YD.	FT.	FT.	FT.	FT.	SQ. YD.	EACH	CU. YD.	FT.	FT.	FT.
SUBSTRUCTURE																
SB SEMI-INTEGRAL ABUTMENT 1	279.9	20.3	23,122	1,409	1	371					60		280			
NB SEMI-INTEGRAL END BENT 1	97.4	20.3	12,890	1,419	1	141		545	23		57	33				
SB PIER 1	253.0		54,295		1						409		426			
NB PIER 1	253.0		54,295		1						409		396			
SB PIER 2	233.6		49,703		1						343		419			
NB PIER 2	237.3		48,892		1						356		544			
SB SEMI-INTEGRAL END BENT 2	109.1	20.3	13,159	1,409	1	146		495	20		57	34	12			164
NB SEMI-INTEGRAL ABUTMENT 2	232.7	20.3	24,219	1,409	1	286					66		1,006			
SB SUPERSTRUCTURE		756.0		169,753			2,142.7			229	1,433			734	734	
NB SUPERSTRUCTURE		749.4		169,136			2,139.4			224	1,423			738	738	
BRIDGE TOTALS	1,696.0	1,586.6	280,575	344,535	1	944	4,282.1	1,040	43	453	4,613	67	3,083	1,472	1,472	164

Note: Bridge plans are detailed using English dimensions.  
Roadway plans are metric and will be constructed using metric dimensions.

INDEX OF SHEETS

Sheet No.	Description
S1	Title Sheet
S2	General Notes
S3	Layout
S4-S5	Soundings
S6	Southbound Foundation Layout
S7	Northbound Foundation Layout
S8-S9	Southbound Semi-Integral Abutment 1 and Details
S10-S11	Northbound Semi-Integral End Bent 1 and Details
S12-S13	Southbound Pier 1 and Details
S14-S15	Northbound Pier 1 and Details
S16-S17	Southbound Pier 2 and Details
S18-S19	Northbound Pier 2 and Details
S20-S21	Southbound Semi-Integral End Bent 2 and Details
S22-S23	Northbound Semi-Integral Abutment 2 and Details
S24	Framing Plan
S25	PCIB Type VI Details
S26	Southbound Superstructure
S27	Northbound Superstructure
S28	Superstructure Details
S29	Superstructure Bar Bill
S30	Intermediate Diaphragm Details
S31	Southbound Screed Plan
S32	Southbound Construction Elevations
S33	Northbound Screed Plan
S34	Northbound Construction Elevations
S35	Protective Fence Details
S36	Rail System Type 3
S37-S38	Embankment Details

SPECIAL NOTES

SPECIAL PROVISIONS

69 Embankment at Bridge End Bent Structures

STANDARD DRAWINGS

BBP-001-12	Elastomeric Bearing Pads for Prestressed Beams
BBP-002-04	Bearing Details
BGX-006-09	Stencils for Structures
BGX-012-02	Geotechnical Legend
BJE-001-12	Neoprene Expansion Dams and Armored Edges
BPS-003-09	HP 12 x 53 Steel Pile

SPECIFICATIONS

2012 Standard Specifications for Road and Bridge Construction

2002 AASHTO Standard Specifications for Highway Bridges

REVISION	DATE
DATE: Mar. 2014	CHECKED BY: R.J.W.
DESIGNED BY: J.T.D.	DETAILED BY: J.T.D.
DATE: June 16, 2014	

Commonwealth of Kentucky  
DEPARTMENT OF HIGHWAYS

COUNTY

BULLITT

ROUTE  
KY 61

CROSSING  
CSX Railroad

TITLE SHEET

PREPARED BY  
Qk4

1046 W. Chestnut Street  
Louisville, Kentucky 40202

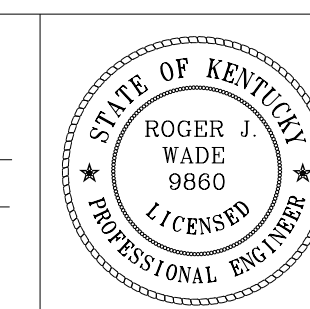
SHEET NO.

S1

DRAWING NO.

24693

BY: *Roger J. Wade*  
DATE: June 16, 2014



ITEM NUMBER 5-117.00

TRANSPORTATION CABINET  
DEPARTMENT OF HIGHWAYS

# BULLITT COUNTY

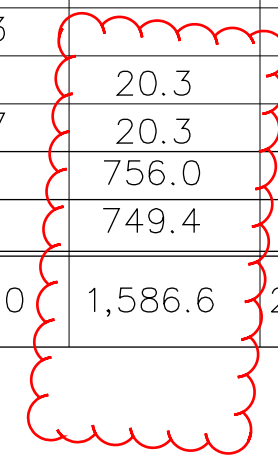
## KY 61 OVER

# CSX RAILROAD

## Station 128+78.05

ESTIMATE OF QUANTITIES

ITEM NUMBER	8100	8104	8150	8151	8003	2231	8635	8046	8033	3299	2998	8094	8002	21532ED	23964EC	8039
BID ITEM	CONC. CLASS "A"	CONC. CLASS "AA"	STEEL REINF.	STL. REINF. EPOXY COATED	FOUNDATION PREPARATION	GRANULAR EMBANKMENT	PPC I-BEAM TYPE VI	STEEL PILES (HP12x53)	TEST PILES (HP12x53)	ARMORED EDGE	MASONRY COATING	PILE POINTS 12"	STRUCTURE EXCAVATION SOLID ROCK	RAIL SYSTEM TYPE 3	PROTECTIVE FENCE	PRE-DRILLING FOR PILES
UNIT	CU. YD.	CU. YD.	lbs.	lbs.	L.S.	CU. YD.	FT.	FT.	FT.	FT.	SQ. YD.	EACH	CU. YD.	FT.	FT.	FT.
SUBSTRUCTURE																
SB SEMI-INTEGRAL ABUTMENT 1	279.9	20.3	23,122	1,409	1	371					60		280			
NB SEMI-INTEGRAL END BENT 1	97.4	20.3	12,890	1,419	1	141		545	23		57	33				
SB PIER 1	253.0		54,295		1						409		426			
NB PIER 1	253.0		54,295		1						409		396			
SB PIER 2	233.6		49,703		1						343		419			
NB PIER 2	237.3		48,892		1						356		544			
SB SEMI-INTEGRAL END BENT 2	109.1	20.3	13,159	1,409	1	146		495	20		57	34	12			164
NB SEMI-INTEGRAL ABUTMENT 2	232.7	20.3	24,219	1,409	1	286					66		1,006			
SB SUPERSTRUCTURE		756.0		169,753			2,142.7			229	1,433			734	734	
NB SUPERSTRUCTURE		749.4		169,136			2,139.4			224	1,423			738	738	
BRIDGE TOTALS	1,696.0	1,586.6	280,575	344,535	1	944	4,282.1	1,040	43	453	4,613	67	3,083	1,472	1,472	164



Note: Bridge plans are detailed using English dimensions. Roadway plans are metric and will be constructed using metric dimensions.

INDEX OF SHEETS

Sheet No.	Description
S1	Title Sheet
S2	General Notes
S3	Layout
S4-S5	Soundings
S6	Southbound Foundation Layout
S7	Northbound Foundation Layout
S8-S9	Southbound Semi-Integral Abutment 1 and Details
S10-S11	Northbound Semi-Integral End Bent 1 and Details
S12-S13	Southbound Pier 1 and Details
S14-S15	Northbound Pier 1 and Details
S16-S17	Southbound Pier 2 and Details
S18-S19	Northbound Pier 2 and Details
S20-S21	Southbound Semi-Integral End Bent 2 and Details
S22-S23	Northbound Semi-Integral Abutment 2 and Details
S24	Framing Plan
S25	PCIB Type VI Details
S26	Southbound Superstructure
S27	Northbound Superstructure
S28	Superstructure Details
S29	Superstructure Bar Bill
S30	Intermediate Diaphragm Details
S31	Southbound Screed Plan
S32	Southbound Construction Elevations
S33	Northbound Screed Plan
S34	Northbound Construction Elevations
S35	Protective Fence Details
S36	Rail System Type 3
S37-S38	Embankment Details

SPECIAL NOTES

SPECIAL PROVISIONS

69 Embankment at Bridge End Bent Structures

STANDARD DRAWINGS

BBP-001-12	Elastomeric Bearing Pads for Prestressed Beams
BBP-002-04	Bearing Details
BGX-006-09	Stencils for Structures
BGX-012-02	Geotechnical Legend
BJE-001-12	Neoprene Expansion Dams and Armored Edges
BPS-003-09	HP 12 x 53 Steel Pile

SPECIFICATIONS

2012 Standard Specifications for Road and Bridge Construction  
2002 AASHTO Standard Specifications for Highway Bridges

REVISION	DATE
DATE: Mar. 2014	CHECKED BY: R.J.W.
DESIGNED BY: J.T.D.	DATE: June 16, 2014
DETAILED BY: F.K.	DATE: June 16, 2014

Commonwealth of Kentucky  
DEPARTMENT OF HIGHWAYS

BULLITT

ROUTE KY 61 CROSSING CSX Railroad

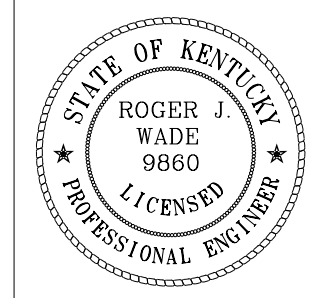
TITLE SHEET

PREPARED BY Qk4

1046 W. Chestnut Street  
Louisville, Kentucky 40202

SHEET NO. S1  
DRAWING NO. 24693

BY: *Roger J. Wade*  
DATE: June 16, 2014



ITEM NUMBER 5-117.00

## GENERAL NOTES

SPECIFICATIONS

ALL REFERENCES TO THE STANDARD SPECIFICATIONS ARE TO THE 2012 EDITION OF THE KENTUCKY DEPARTMENT OF HIGHWAYS STANDARD SPECIFICATIONS FOR ROAD AND BRIDGE CONSTRUCTION, WITH CURRENT SUPPLEMENTAL SPECIFICATIONS.

ALL REFERENCES TO THE AASHTO SPECIFICATIONS ARE TO THE 2002 EDITION OF THE AASHTO STANDARD SPECIFICATIONS FOR HIGHWAY BRIDGES.

DESIGN LOAD

THIS BRIDGE IS DESIGNED FOR HS25 LIVE LOAD OR ALTERNATE MILITARY LOADING, WHICHEVER PRODUCES THE GREATER STRESS. THE HS25 LIVE LOAD IS ARRIVED AT BY INCREASING THE STANDARD HS20-44 TRUCK AND LANE LOADS AS SPECIFIED IN THE AASHTO SPECIFICATIONS BY 25%.

THIS BRIDGE IS DESIGNED FOR A WIND LOAD BASED ON A WIND VELOCITY OF 100 MPH.

DESIGN METHOD

ALL REINFORCED CONCRETE MEMBERS ARE DESIGNED BY THE LOAD FACTOR METHOD AS SPECIFIED IN THE CURRENT AASHTO SPECIFICATIONS.

MATERIALS DESIGN SPECIFICATIONS

FOR CLASS "A" REINFORCED CONCRETE:	F'c = 3500 PSI
FOR CLASS "AA" REINFORCED CONCRETE:	F'c = 4000 PSI
FOR PRESTRESSED CONCRETE GIRDERS:	AS SHOWN ON PCIB DETAIL SHEET

CONCRETE

CLASS "AA" CONCRETE IS TO BE USED THROUGHOUT THE SLAB, BARRIERS, END BENT WINGWALLS AND DIAPHRAGMS. ALL OTHER CONCRETE, EXCEPT FOR THAT IN THE PRESTRESSED GIRDERS SHALL BE CLASS "A". PRESTRESSED GIRDER CONCRETE SHALL BE IN ACCORDANCE WITH THE PLANS AND SPECIFICATIONS.

MATERIAL SPECIFICATIONS

ASTM OR AASHTO SPECIFICATIONS AS DESIGNATED BELOW SHALL GOVERN THE FOLLOWING MATERIALS FURNISHED:

STRUCTURAL STEEL	ASTM A36/AASHTO M 183
BOLTS	ASTM A325
STEEL REINFORCEMENT	ASTM A615 GRADE 60

REINFORCEMENT

DIMENSIONS SHOWN FROM THE FACE OF CONCRETE TO BARS ARE CLEAR DISTANCES UNLESS OTHERWISE SHOWN. SPACING OF BARS IS FROM CENTER TO CENTER OF BARS.

ANY REINFORCING BARS DESIGNATED BY THE SUFFIX (s) IN A "BILL OF REINFORCEMENT" SHALL BE CONSIDERED A STIRRUP FOR PURPOSES OF BAR BEND DIAMETERS.

ALL REINFORCING BARS DESIGNATED BY SUFFIX (E) IN THE PLANS SHALL BE EPOXY COATED IN ACCORDANCE WITH SECTION 811.10 OF THE STANDARD SPECIFICATIONS.

MASONRY COATING

APPLY MASONRY COATING FINISH TO VARIOUS PARTS OF STRUCTURE IN ACCORDANCE WITH SUBSECTION 601.03.18 OF THE STANDARD SPECIFICATIONS

PILING

PILES SHALL BE DRIVEN TO REFUSAL OR TO SOLID ROCK.

TEST PILES SHALL BE DRIVEN WHERE DESIGNATED ON THE PLANS TO DETERMINE THE LENGTH OF PILE REQUIRED.

ALL TEST PILES SHALL BE ACCURATELY LOCATED SO THAT THEY MAY BE USED IN THE FINISHED STRUCTURE.

THE PILING THROUGH THE MSE WALL MUST BE SLEEVED, OR THE MSE WALL MUST BE CONSTRUCTED AROUND THE PILING.

PRE-DRILL INTO EXISTING BEDROCK. ONCE THE PILE IS PLACED INTO THE HOLE, BACKFILL WITH SAND OR PEA GRAVEL. PLACE A PILE SLEEVE AROUND THE PILES IN THE MSE INTERNAL BACKFILL AREA, AND BACKFILL WITH SAND OR PEA GRAVEL. PILES SHALL BE DRIVEN TO VERIFY REFUSAL AFTER BACKFILLING OPERATIONS ARE COMPLETE. THE COST OF ALL MATERIALS, LABOR AND EQUIPMENT NEEDED TO PRE-DRILL AND BACKFILL THE HOLES SHALL BE INCLUDED IN THE PRICE PER LINEAR FOOT FOR PRE-DRILLING FOR PILES.

BEVELED EDGES

ALL EXPOSED EDGES SHALL BE BEVELED 7/8" UNLESS OTHERWISE SHOWN.

DIMENSIONS

DIMENSIONS ARE IN FEET AND INCHES UNLESS OTHERWISE SHOWN. DIMENSIONS ARE FOR A NORMAL TEMPERATURE OF 60° F. LAYOUT DIMENSIONS ARE HORIZONTAL MEASUREMENTS. STATIONING IS SHOWN IN FEET AND ELEVATIONS ARE IN FEET.

PAYMENT FOR STRUCTURAL STEEL

THE LUMP SUM BID FOR STRUCTURAL STEEL SHALL BE FULL PAYMENT FOR ALL STRUCTURAL STEEL, WELDING AND WELDING MATERIALS, PAINT, AND ALL LABOR AND MATERIALS NECESSARY TO ERECT THE STEEL IN ACCORDANCE WITH THE PLANS AND SPECIFICATIONS. THE APPROXIMATE WEIGHT OF STRUCTURAL STEEL SHOWN IN THE ESTIMATE OF QUANTITIES DOES NOT INCLUDE OVERRUN OR WELD MATERIAL.

POURING SEQUENCE

THE POURING SEQUENCE OF THE SLAB MAY NOT BE CHANGED WITHOUT WRITTEN APPROVAL OF THE DESIGNER.

TEMPORARY SUPPORTS

TEMPORARY SUPPORTS OR SHORING WILL NOT BE PERMITTED UNDER THE GIRDERS WHEN POURING THE CONCRETE FLOOR SLAB OR WHEN TAKING "TOP OF BEAM" ELEVATIONS.

PAYMENT FOR PRECAST CONCRETE BEAMS

THE BASIS FOR PAYMENT FOR THE PRESTRESSED CONCRETE BEAMS SHALL BE AT THE CONTRACT UNIT PRICE PER LINEAR METER OF BEAM, IN ACCORDANCE WITH THE SPECIFICATIONS.

SHOP DRAWINGS

CONTRARY TO THE SPECIFICATIONS, SHOP DRAWINGS REQUIRING REVIEW WITH NO DESIGN CHANGES SHALL BE SUBMITTED DIRECTLY FROM THE FABRICATOR TO THE DIVISION OF BRIDGE DESIGN.

SPIRAL COLUMN TIES

SPLICED FOR SPIRAL WHERE DESIRED BY THE CONTRACTOR SHALL BE MADE WITH A MINIMUM OF ONE AND ONE HALF TURNS OF THE SPIRAL. NO ADDITIONAL PAYMENT WILL BE MADE FOR THESE SPLICES, AND THE COST WILL BE CONSIDERED INCIDENTAL TO THE COST OF THE DEVELOPED LENGTH OF SPIRAL SHOWN ON THE PLANS. WEIGHT OF SPACERS IS NOT INCLUDED IN THE ESTIMATE OF QUANTITIES.

ELECTRICAL CONDUIT

THE LUMP SUM BID FOR THIS ITEM SHALL INCLUDE CONDUIT AND OTHER MATERIALS AND LABOR NECESSARY FOR PLACING THESE MATERIALS IN ACCORDANCE WITH THE PLANS AND SPECIFICATIONS. THE BARRIER ON THE NORTH SIDE SHALL BE 4" CONDUIT, WHILE THE SOUTH BARRIER SHALL BE 3" CONDUIT.

TEMPORARY CONDUIT

THE LUMP SUM BID FOR THIS ITEM SHALL INCLUDE ALL MATERIALS AND LABOR TO TEMPORARILY RELOCATE THE EXISTING OVERHEAD WINDSTREAM LINE ONTO THE EXISTING KY61 OVER I-65 BRIDGE. THE LINE SHALL BE PLACED IN STEEL CONDUIT THAT WILL BE PLACED ON THE SHOULDER AND WILL BE SECURED BY A CABLE/HOSE PROTECTION SYSTEM. THE CABLE/HOSE PROTECTION SYSTEM SHALL BE APPROVED BY THE RESIDENT ENGINEER. DRILLING INTO THE EXISTING BRIDGE IS PROHIBITED.

REVISION		DATE
DATE:	<i>1 Nov. 2002</i>	CHECKED BY
DESIGNED BY:	<i>S.P.M.</i>	<i>R.J.W.</i>
DETAILED BY:	<i>C.L.C.</i>	<i>S.P.M.</i>
<b>Commonwealth of Kentucky</b>		
<b>DEPARTMENT OF HIGHWAYS</b>		
COUNTY		
<b>BULLITT</b>		
ROUTE <b>KY 61</b>	CROSSING <b>I-65</b>	
<b>GENERAL NOTES</b>		
PREPARED BY <b>Qk4</b>		SHEET NO. <b>S2</b>
1046 E. Chestnut St. Louisville, Kentucky 40204		DRAWING NO. <b>24691</b>

**ITEM NUMBER 5-117.00**

## GENERAL NOTES

**SPECIFICATIONS**

ALL REFERENCES TO THE STANDARD SPECIFICATIONS ARE TO THE 2012 EDITION OF THE KENTUCKY DEPARTMENT OF HIGHWAYS STANDARD SPECIFICATIONS FOR ROAD AND BRIDGE CONSTRUCTION, WITH CURRENT SUPPLEMENTAL SPECIFICATIONS.

ALL REFERENCES TO THE AASHTO SPECIFICATIONS ARE TO THE 2002 EDITION OF THE AASHTO STANDARD SPECIFICATIONS FOR HIGHWAY BRIDGES.

**DESIGN LOAD**

THIS BRIDGE IS DESIGNED FOR HS25 LIVE LOAD OR ALTERNATE MILITARY LOADING, WHICHEVER PRODUCES THE GREATER STRESS. THE HS25 LIVE LOAD IS ARRIVED AT BY INCREASING THE STANDARD HS20-44 TRUCK AND LANE LOADS AS SPECIFIED IN THE AASHTO SPECIFICATIONS BY 25%.

THIS BRIDGE IS DESIGNED FOR A WIND LOAD BASED ON A WIND VELOCITY OF 100 MPH.

**DESIGN METHOD**

ALL REINFORCED CONCRETE MEMBERS ARE DESIGNED BY THE LOAD FACTOR METHOD AS SPECIFIED IN THE CURRENT AASHTO SPECIFICATIONS.

**MATERIALS DESIGN SPECIFICATIONS**

FOR CLASS "A" REINFORCED CONCRETE:	F'c = 3500 PSI
FOR CLASS "AA" REINFORCED CONCRETE:	F'c = 4000 PSI
FOR PRESTRESSED CONCRETE GIRDERS:	AS SHOWN ON PCIB DETAIL SHEET

**CONCRETE**

CLASS "AA" CONCRETE IS TO BE USED THROUGHOUT THE SLAB, BARRIERS, END BENT WINGWALLS AND DIAPHRAGMS. ALL OTHER CONCRETE, EXCEPT FOR THAT IN THE PRESTRESSED GIRDERS SHALL BE CLASS "A". PRESTRESSED GIRDER CONCRETE SHALL BE IN ACCORDANCE WITH THE PLANS AND SPECIFICATIONS.

**MATERIAL SPECIFICATIONS**

ASTM OR AASHTO SPECIFICATIONS AS DESIGNATED BELOW SHALL GOVERN THE FOLLOWING MATERIALS FURNISHED:

STRUCTURAL STEEL	ASTM A36/AASHTO M 183
BOLTS	ASTM A325
STEEL REINFORCEMENT	ASTM A615 GRADE 60

**REINFORCEMENT**

DIMENSIONS SHOWN FROM THE FACE OF CONCRETE TO BARS ARE CLEAR DISTANCES UNLESS OTHERWISE SHOWN. SPACING OF BARS IS FROM CENTER TO CENTER OF BARS.

ANY REINFORCING BARS DESIGNATED BY THE SUFFIX (s) IN A "BILL OF REINFORCEMENT" SHALL BE CONSIDERED A STIRRUP FOR PURPOSES OF BAR BEND DIAMETERS.

ALL REINFORCING BARS DESIGNATED BY SUFFIX (E) IN THE PLANS SHALL BE EPOXY COATED IN ACCORDANCE WITH SECTION 811.10 OF THE STANDARD SPECIFICATIONS.

**MASONRY COATING**

APPLY MASONRY COATING FINISH TO VARIOUS PARTS OF STRUCTURE IN ACCORDANCE WITH SUBSECTION 601.03.18 OF THE STANDARD SPECIFICATIONS

**PILING**

PILES SHALL BE DRIVEN TO REFUSAL OR TO SOLID ROCK.

TEST PILES SHALL BE DRIVEN WHERE DESIGNATED ON THE PLANS TO DETERMINE THE LENGTH OF PILE REQUIRED.

ALL TEST PILES SHALL BE ACCURATELY LOCATED SO THAT THEY MAY BE USED IN THE FINISHED STRUCTURE.

THE PILING THROUGH THE MSE WALL MUST BE SLEEVED, OR THE MSE WALL MUST BE CONSTRUCTED AROUND THE PILING.

PRE-DRILL INTO EXISTING BEDROCK. ONCE THE PILE IS PLACED INTO THE HOLE, BACKFILL WITH SAND OR PEA GRAVEL. PLACE A PILE SLEEVE AROUND THE PILES IN THE MSE INTERNAL BACKFILL AREA, AND BACKFILL WITH SAND OR PEA GRAVEL. PILES SHALL BE DRIVEN TO VERIFY REFUSAL AFTER BACKFILLING OPERATIONS ARE COMPLETE. THE COST OF ALL MATERIALS, LABOR AND EQUIPMENT NEEDED TO PRE-DRILL AND BACKFILL THE HOLES SHALL BE INCLUDED IN THE PRICE PER LINEAR FOOT FOR PRE-DRILLING FOR PILES.

**BEVELED EDGES**

ALL EXPOSED EDGES SHALL BE BEVELED 7/8" UNLESS OTHERWISE SHOWN.

**DIMENSIONS**

DIMENSIONS ARE IN FEET AND INCHES UNLESS OTHERWISE SHOWN. DIMENSIONS ARE FOR A NORMAL TEMPERATURE OF 60° F. LAYOUT DIMENSIONS ARE HORIZONTAL MEASUREMENTS. STATIONING IS SHOWN IN FEET AND ELEVATIONS ARE IN FEET.

**PAYMENT FOR STRUCTURAL STEEL**

THE LUMP SUM BID FOR STRUCTURAL STEEL SHALL BE FULL PAYMENT FOR ALL STRUCTURAL STEEL, WELDING AND WELDING MATERIALS, PAINT, AND ALL LABOR AND MATERIALS NECESSARY TO ERECT THE STEEL IN ACCORDANCE WITH THE PLANS AND SPECIFICATIONS. THE APPROXIMATE WEIGHT OF STRUCTURAL STEEL SHOWN IN THE ESTIMATE OF QUANTITIES DOES NOT INCLUDE OVERRUN OR WELD MATERIAL.

**POURING SEQUENCE**

THE POURING SEQUENCE OF THE SLAB MAY NOT BE CHANGED WITHOUT WRITTEN APPROVAL OF THE DESIGNER.

**TEMPORARY SUPPORTS**

TEMPORARY SUPPORTS OR SHORING WILL NOT BE PERMITTED UNDER THE GIRDERS WHEN POURING THE CONCRETE FLOOR SLAB OR WHEN TAKING "TOP OF BEAM" ELEVATIONS.

**PAYMENT FOR PRECAST CONCRETE BEAMS**

THE BASIS FOR PAYMENT FOR THE PRESTRESSED CONCRETE BEAMS SHALL BE AT THE CONTRACT UNIT PRICE PER LINEAR METER OF BEAM, IN ACCORDANCE WITH THE SPECIFICATIONS.

**SHOP DRAWINGS**

CONTRARY TO THE SPECIFICATIONS, SHOP DRAWINGS REQUIRING REVIEW WITH NO DESIGN CHANGES SHALL BE SUBMITTED DIRECTLY FROM THE FABRICATOR TO THE DIVISION OF BRIDGE DESIGN.

**SPIRAL COLUMN TIES**

SPLICED FOR SPIRAL WHERE DESIRED BY THE CONTRACTOR SHALL BE MADE WITH A MINIMUM OF ONE AND ONE HALF TURNS OF THE SPIRAL. NO ADDITIONAL PAYMENT WILL BE MADE FOR THESE SPLICES, AND THE COST WILL BE CONSIDERED INCIDENTAL TO THE COST OF THE DEVELOPED LENGTH OF SPIRAL SHOWN ON THE PLANS. WEIGHT OF SPACERS IS NOT INCLUDED IN THE ESTIMATE OF QUANTITIES.

**ELECTRICAL CONDUIT**

THE LUMP SUM BID FOR THIS ITEM SHALL INCLUDE CONDUIT AND OTHER MATERIALS AND LABOR NECESSARY FOR PLACING THESE MATERIALS IN ACCORDANCE WITH THE PLANS AND SPECIFICATIONS. THE BARRIER ON THE NORTH SIDE SHALL BE 4" CONDUIT, WHILE THE SOUTH BARRIER SHALL BE 3" CONDUIT.

**TEMPORARY CONDUIT**

THE LUMP SUM BID FOR THIS ITEM SHALL INCLUDE ALL MATERIALS AND LABOR TO TEMPORARILY RELOCATE THE EXISTING OVERHEAD WINDSTREAM LINE ONTO THE EXISTING KY61 OVER I-65 BRIDGE. THE LINE SHALL BE PLACED IN STEEL CONDUIT THAT WILL BE PLACED ON THE SHOULDER AND WILL BE SECURED BY A CABLE/HOSE PROTECTION SYSTEM. THE CABLE/HOSE PROTECTION SYSTEM SHALL BE APPROVED BY THE RESIDENT ENGINEER. DRILLING INTO THE EXISTING BRIDGE IS PROHIBITED.

REVISION		DATE
DATE:	<i>1 Nov. 2002</i>	CHECKED BY
DESIGNED BY:	<i>S.P.M.</i>	<i>R.J.W.</i>
DETAILED BY:	<i>C.L.C.</i>	<i>S.P.M.</i>
<b>Commonwealth of Kentucky</b>		
<b>DEPARTMENT OF HIGHWAYS</b>		
COUNTY		
<b>BULLITT</b>		
ROUTE <b>KY 61</b>	CROSSING <b>I-65</b>	
<b>GENERAL NOTES</b>		
PREPARED BY <b>Qk4</b>		SHEET NO. <b>S2</b>
1046 E. Chestnut St. Louisville, Kentucky 40204		DRAWING NO. <b>24691</b>

**ITEM NUMBER 5-117.00**

PAVING AREAS - ASPHALT ALTERNATE

ITEM	S Q U A R E M E T E R S										TEMP. PAVEMENT (MOT)	TOTAL PROJECT	
	KY 61 RURAL 1 TO STA. 5+00	KY 61 RURAL 2 FROM STA. 5+00	FRONTAGE ROAD NO. 1	NORTH VIEW DRIVE	APPROACH ROAD NO. 1	APPROACH ROAD NO. 2	FRONTAGE ROAD NO. 2	BECNEL DRIVE	HILL BROOK DRIVE	EXIST. KY 61 RE-BUILD			CONESTOGA PARKWAY
Ⓐ QUANTITY SHOWN IN CUBIC METERS													
ROADBED PREPARATION													
600mm ROCK ROADBED	33,847												33,847
FABRIC-GEOTEXTILE TYPE IV	13,483	80,375											93,858
200mm LIME STABILIZED ROADBED	15,220												15,220
TRAFFIC LANES (MAINLINE RURAL 1)													
30mm CL3 ASPH SURF 9.5A PG64-22	12,629												12,629
75mm CL3 ASPH BASE 25.0D PG64-22	12,716												12,716
95mm CL3 ASPH BASE 25.0D PG64-22	12,933												12,933
95mm CL3 ASPH BASE 25.0D PG64-22	13,208												13,208
100mm DRAINAGE BLANKET TYPE II ASPHALT													
100mm CSB	13,483												13,483
TRAFFIC LANES (MAINLINE RURAL 2)													
30mm CL3 ASPH SURF 9.5B PG64-22		25,757											25,757
75mm CL3 ASPH BASE 25.0D PG64-22		25,926											25,926
75mm CL3 ASPH BASE 25.0D PG64-22		26,349											26,349
80mm CL3 ASPH BASE 25.0D PG64-22		26,772											26,772
100mm CRUSHED STONE BASE		27,223											27,223
SHOULDERS (MAINLINE RURAL 1 & RURAL 2)													
30mm CL2 ASPH SURF 9.5D PG64-22	5,912	12,503											18,415
75mm CL2 ASPH BASE 25.0D PG64.22	5,912	12,503											18,415
FULL DEPTH CSB	4,198												4,198
FULL DEPTH CRUSHED STONE BASE		8,183											8,183
ASPHALT SEAL COAT	3,474	6,772											10,246
ASPHALT SEAL AGGREGATE	3,474	6,772											10,246
TRAFFIC LANES (APPROACH ROADS & TEMPORARY PVMIT)													
30mm CL2 ASPH SURF 9.5D PG64-22			4,716	188	83	1,451	572	1,131	229	1,054			7,224
100mm CL2 ASPH BASE 25.0D PG64.22			4,757	190	84	1,484	578	1,140	231	1,062			7,289
200mm CSB			4,896	197	87	1,507	598	1,173	236	1,089			7,382
ENTRANCES													
30mm CL2 ASPH SURF 9.5D PG64-22	34	165	143				94	31	58	542			1,067
50mm CL2 ASPH BASE 25.0D PG64-22	34	166	146				96	31	59	545			1,077
150mm CSB	35	167	150				99	32	61	551			1,095

PAVING SUMMARY - ASPHALT ALTERNATE

ITEM CODE	ITEM	UNIT	KY 61 RURAL 1 TO STA. 5+00	KY 61 RURAL 2 FROM STA. 5+00	FRONTAGE ROAD NO. 1	NORTH VIEW DRIVE	APPROACH ROAD NO. 1	APPROACH ROAD NO. 2	FRONTAGE ROAD NO. 2	BECNEL DRIVE	HILL BROOK DRIVE	EXIST. KY 61 RE-BUILD	CONESTOGA PARKWAY	TEMP. PAVEMENT (MOT)	TOTAL PROJECT
0003M	CRUSHED STONE BASE	① ⑧ M TON	14,051	26,779	2,454	97	43	738	329	587	116	556	202	3,617	49,569
0013M	LIME STABILIZED ROADBED(TOP 200mm)	SQ M	15,220												15,220
0014M	LIME	⑦ M TON	312												312
0018M	DRAINAGE BLANKET-TYPE II-ASPH	④ M TON	2,885												2,885
0100M	ASPHALT SEAL AGGREGATE	② M TON	75	147											222
0103M	ASPHALT SEAL COAT	⑤ M TON	9	18											27
0212M	CL 2 ASPHALT BASE 25.0D PG64-22	M TON	1,046	2,224	1,135	45	20	344	144	272	54	257	64	1,713	7,321
0214M	CL 3 ASPHALT BASE 25.0D PG64-22	M TON	8,077	14,246											22,323
0301M	CL 2 ASPHALT SURFACE 9.5D PG64-22	M TON	419	893	342	13	6	102	47	82	16	78	38	609	2,545
22906ES403	CL 3 ASPHALT SURFACE 9.5A PG64-22	M TON	890												890
0388M	CL 3 ASPHALT SURFACE 9.5B PG64-22	M TON		1,816											1,816
0358M	ASPHALT CURING SEAL	⑤ M TON	17												17
2702M	SAND FOR BLOTTER	⑥ M TON	41												41
2599M	FABRIC-GEOTEXTILE TY IV	⑩ SQ M	13,483	80,375											93,858

NOTES

ALL ASPHALT MIXTURES SHALL BE ESTIMATED AT 2.35 KG PER SQ. M. PER mm OF DEPTH, UNLESS NOTED OTHERWISE.

- ① ESTIMATED AT 2.45 KG PER SQ. M. PER mm OF DEPTH.
- ② ESTIMATED AT 10.85 KG PER SQ. M. (TWO APPLICATIONS)
- ③ ESTIMATED AT 1.3 KG PER SQ. M. (TWO APPLICATIONS)
- ④ ESTIMATED AT 2.14 KG PER SQ. M. PER mm OF DEPTH
- ⑤ 1.09 KG/SQ. M.
- ⑥ 2.71 KG/SQ. M.
- ⑦ MTON (6% BY MASS AT 1711 KG/CU. M.
- ⑧ INCLUDES 450 MTONS OF CRUSHED STONE BASE FOR REPAIR OF PUBLIC ROADWAY USED FOR CONSTRUCTION ACCESS AND OTHER MISCELLANEOUS USES.
- ⑨ FABRIC ON TOP OF LSR IN KY 61 RURAL 1 SECTION, ON TOP OF RR AND ON TOP & BOTTOM OF RR IN FILLS IN KY 61 RURAL 2 SECTION.
- ⑩ CARRIED OVER TO GENERAL SUMMARY.

KY 61 (PRESTON HIGHWAY)  
 PAVING AREAS & SUMMARY  
 ASPHALT ALTERNATE

METRIC



PAVING AREAS - ASPHALT ALTERNATE

ITEM	S Q U A R E M E T E R S										TEMP. PAVEMENT (MOT)	TOTAL PROJECT	
	KY 61 RURAL 1 TO STA. 5+00	KY 61 RURAL 2 FROM STA. 5+00	FRONTAGE ROAD NO. 1	FRONTAGE ROAD NO. 1	FRONTAGE ROAD NO. 2	FRONTAGE ROAD NO. 2	APPROACH ROAD NO. 1	APPROACH ROAD NO. 2	HILL BROOK DRIVE	EXIST. KY 61 RE-BUILD PARKWAY			CONESTOGA PARKWAY
Ⓐ QUANTITY SHOWN IN CUBIC METERS													
ROADBED PREPARATION													
600mm ROCK ROADBED Ⓐ	33,847												33,847
FABRIC-GEOTEXTILE TYPE IV	13,483	80,375											93,858
200mm LIME STABILIZED ROADBED	15,220												15,220
TRAFFIC LANES (MAINLINE RURAL 1)													
30mm CL3 ASPH SURF 9.5A PG64-22	12,629												12,629
75mm CL3 ASPH BASE 25.0D PG64-22	12,716												12,716
95mm CL3 ASPH BASE 25.0D PG64-22	12,933												12,933
95mm CL3 ASPH BASE 25.0D PG64-22	13,208												13,208
100mm DRAINAGE BLANKET TYPE II ASPHALT													
100mm CSB	13,483												13,483
TRAFFIC LANES (MAINLINE RURAL 2)													
30mm CL3 ASPH SURF 9.5B PG64-22		25,757											25,757
75mm CL3 ASPH BASE 25.0D PG64-22		25,926											25,926
75mm CL3 ASPH BASE 25.0D PG64-22		26,349											26,349
80mm CL3 ASPH BASE 25.0D PG64-22		26,772											26,772
100mm CRUSHED STONE BASE		27,223											27,223
SHOULDERS (MAINLINE RURAL 1 & RURAL 2)													
30mm CL2 ASPH SURF 9.5D PG64-22	5,912	12,503											18,415
75mm CL2 ASPH BASE 25.0D PG64.22	5,912	12,503											18,415
FULL DEPTH CSB Ⓐ	4,198												4,198
FULL DEPTH CRUSHED STONE BASE Ⓐ		8,183											8,183
ASPHALT SEAL COAT	3,474	6,772											10,246
ASPHALT SEAL AGGREGATE	3,474	6,772											10,246
TRAFFIC LANES (APPROACH ROADS & TEMPORARY PWMT)													
30mm CL2 ASPH SURF 9.5D PG64-22			4,716	188	83	1,451	572	1,131	229	1,054			7,224
100mm CL2 ASPH BASE 25.0D PG64.22			4,757	190	84	1,484	578	1,140	231	1,062			7,289
200mm CSB			4,896	197	87	1,507	598	1,173	236	1,089			7,382
ENTRANCES													
30mm CL2 ASPH SURF 9.5D PG64-22	34	165											1,067
50mm CL2 ASPH BASE 25.0D PG64-22	34	166											1,077
150mm CSB	35	167											1,095

PAVING SUMMARY - ASPHALT ALTERNATE

ITEM CODE	ITEM	UNIT	KY 61 RURAL 1 TO STA. 5+00	KY 61 RURAL 2 FROM STA. 5+00	FRONTAGE ROAD NO. 1	FRONTAGE ROAD NO. 1	FRONTAGE ROAD NO. 2	FRONTAGE ROAD NO. 2	BECNEL DRIVE	HILL BROOK DRIVE	EXIST. KY 61 RE-BUILD PARKWAY	CONESTOGA PARKWAY	TEMP. PAVEMENT (MOT)	TOTAL PROJECT
0003M	CRUSHED STONE BASE ①Ⓔ	M TON	14,051	26,779	2,454	97	43	738	329	587	116	202	3,617	49,569
0013M	LIME STABILIZED ROADBED(TOP 200mm)	SQ M	15,220											15,220
0014M	LIME ⑦	M TON	312											312
0018M	DRAINAGE BLANKET-TYPE II-ASPH ④	M TON	2,885											2,885
0100M	ASPHALT SEAL AGGREGATE ②	M TON	75	147										222
0103M	ASPHALT SEAL COAT ③	M TON	9	18										27
0212M	CL 2 ASPHALT BASE 25.0D PG64-22	M TON	1,046	2,224	1,135	45	20	344	144	272	54	64	1,713	7,321
0214M	CL 3 ASPHALT BASE 25.0D PG64-22	M TON	8,077	14,246										22,323
0301M	CL 2 ASPHALT SURFACE 9.5D PG64-22	M TON	419	893	342	13	6	102	47	82	16	38	609	2,545
22906ES403	CL 3 ASPHALT SURFACE 9.5A PG64-22	M TON	890											890
0388M	CL 3 ASPHALT SURFACE 9.5B PG64-22	M TON		1,816										1,816
0358M	ASPHALT CURING SEAL ⑤	M TON	17											17
2702M	SAND FOR BLOTTER ⑥	M TON	41											41
2599M	FABRIC-GEOTEXTILE TY IV ⑩	SQ M	13,483	80,375										93,858

NOTES

ALL ASPHALT MIXTURES SHALL BE ESTIMATED AT 2.35 KG PER SQ. M. PER mm OF DEPTH, UNLESS NOTED OTHERWISE.

- ① ESTIMATED AT 2.45 KG PER SQ. M. PER mm OF DEPTH.
- ② ESTIMATED AT 10.85 KG PER SQ. M. (TWO APPLICATIONS)
- ③ ESTIMATED AT 1.3 KG PER SQ. M. (TWO APPLICATIONS)
- ④ ESTIMATED AT 2.14 KG PER SQ. M. PER mm OF DEPTH
- ⑤ 1.09 KG/SQ. M.
- ⑥ 2.71 KG/SQ. M.
- ⑦ MTON (6% BY MASS AT 1711 KG/CU. M.
- ⑧ INCLUDES 450 MTONS OF CRUSHED STONE BASE FOR REPAIR OF PUBLIC ROADWAY USED FOR CONSTRUCTION ACCESS AND OTHER MISCELLANEOUS USES.
- ⑨ FABRIC ON TOP OF LSR IN KY 61 RURAL 1 SECTION, ON TOP OF RR AND ON TOP & BOTTOM OF RR IN FILLS IN KY 61 RURAL 2 SECTION.
- ⑩ CARRIED OVER TO GENERAL SUMMARY.

KY 61 (PRESTON HIGHWAY) PAVING AREAS & SUMMARY ASPHALT ALTERNATE

METRIC

PAVING AREAS - ASPHALT ALTERNATE

ITEM	KY 61 URBAN	KY 61 RURAL	CHERRY STREET	BLUE LICK ROAD	BISHOP LANE	NORTH SIDE AVENUE	HARBOR AVENUE	POINTE BLVD.	CORAL RIDGE ROAD	ACCESS ROAD NO. 1	FRONTAGE ROAD NO. 1	CONESTOGA PKWY.	TEMP. PAVEMENT (MOT)	TOTAL PROJECT
<b>ROADBED PREPARATION</b>														
LIME STABILIZED ROADBED	49,728	19,831										1,274		70,833
<b>TRAFFIC LANES (MAINLINE URBAN &amp; RURAL 1)</b>														
30mm CL3 ASPH SURF 9.5A PG64-22 (A)	49,643	11,879										1,210		62,731
75mm CL3 ASPH BASE 25.0D PG64-22	44,367	11,964										1,213		57,544
95mm CL3 ASPH BASE 25.0D PG64-22	44,367	12,177										1,223		57,767
95mm CL3 ASPH BASE 25.0D PG64-22	49,728	12,447										1,236		63,411
100mm DRAINAGE BLANKET TYPE II ASPHALT	49,728	12,717										1,248		63,693
100mm CSB	49,728	12,717										1,261		63,706
<b>SHOULDERS (URBAN)</b>														
STANDARD CURB AND GUTTER (SEE GENERAL SUMMARY)														
<b>SHOULDERS (RURAL 1)</b>														
30mm CL2 ASPH SURF 9.5D PG64-22	20	6,483						259						6,503
75mm CL2 ASPH BASE 25.0D PG64.22	20	6,483												6,503
FULL DEPTH CSB (B)	16	4,126												4,142
ASPHALT SEAL COAT	13	3,415												3,428
ASPHALT SEAL AGGREGATE	13	3,415												3,428
<b>TRAFFIC LANES (APPROACH ROADS W/ CURB &amp; GUTTER)</b>														
30mm CL3 ASPH SURF 9.5A PG64-22 (C)			258	932	190	258								1,898
75mm CL3 ASPH BASE 25.0D PG64-22			258	518	191	260								1,486
95mm CL3 ASPH BASE 25.0D PG64-22			258	519	195	264								1,496
200mm CSB			398	691	216	286								1,904
<b>TRAFFIC LANES (APPROACH ROADS &amp; TEMPORARY PVMT)</b>														
30mm CL2 ASPH SURF 9.5D PG64-22							119		3,734	1,126	1,307		7,492	13,777
100mm CL2 ASPH BASE 25.0D PG64-22							120		3,764	1,135	1,319		7,572	13,910
200mm CSB							125		3,862	1,167	1,360		7,781	14,294
<b>ENTRANCES</b>														
30mm CL2 ASPH SURF 9.5D PG64-22 (D)	1,351				38				43	111	83			1,625
50mm CL2 ASPH BASE 25.0D PG64-22 (D)	1,360				39				44	112	84			1,638
150mm CSB (D)	1,376				40				45	114	86			1,661

PAVING SUMMARY - ASPHALT ALTERNATE

ITEM CODE	ITEM	UNIT	KY 61 URBAN	KY 61 RURAL	CHERRY STREET	BLUE LICK ROAD	BISHOP LANE	NORTH SIDE AVENUE	HARBOR AVENUE	POINTE BLVD.	CORAL RIDGE ROAD	ACCESS ROAD NO. 1	FRONTAGE ROAD NO. 1	CONESTOGA PKWY.	TEMP. PAVT. (MOT)	TOTAL PROJECT
0003M	CSB	M TON	13,161	13,675	195	339	121	140	61	153	1,908	614	697	309	3,813	35,186
0013M	LIME STABILIZED ROADBED(TOP 200mm)	SQ M	49,728	19,831										1,274		70,833
0014M	LIME	M TON	1,021	407										26		1,454
0018M	DRAINAGE BLANKET-TYPE II-ASPH	M TON	10,642	2,721										267		13,630
0100M	ASPHALT SEAL AGGREGATE	M TON	1	74												75
0103M	ASPHALT SEAL COAT	M TON		9												9
0212M	CL 2 ASPHALT BASE 25.0D PG64-22	M TON	164	1,143			5		28		889	280	320		1,779	4,608
0214M	CL 3 ASPHALT BASE 25.0D PG64-22	M TON	28,827	7,607	104	207	78	105		104				763		37,795
0301M	CL 2 ASPHALT SURFACE 9.5D PG64-22	M TON	96	457			3		8		266	87	98		528	1,543
22906ES403	CL 3 ASPHALT SURFACE 9.5A PG64-22	M TON	3,500	837	18	66	13	18		18				85		4,555
0358M	ASPHALT CURING SEAL	M TON	54	22										1		77
2702M	SAND FOR BLOTTER	M TON	135	54										3		192
2599M	FABRIC-GEOTEXTILE TY IV	SQ M	49,728	19,831										1,274		70,833

NOTES

ALL ASPHALT MIXTURES SHALL BE ESTIMATED AT 2.35 KG PER SQ. M. PER mm OF DEPTH, UNLESS NOTED OTHERWISE.

- ① ESTIMATED AT 2.45 KG PER SQ. M. PER mm OF DEPTH.
- ② ESTIMATED AT 10.85 KG PER SQ. M. (TWO APPLICATIONS)
- ③ ESTIMATED AT 1.3 KG PER SQ. M. (TWO APPLICATIONS)
- ④ ESTIMATED AT 2.14 KG PER SQ. M. PER mm OF DEPTH
- ⑤ ESTIMATED AT 1.09 KG PER SQ. M.
- ⑥ ESTIMATED AT 2.71 KG PER SQ. M.
- ⑦ MTON (6% BY MASS AT 1711 KG/CU. M.)
- ⑧ INCLUDES 450 MTONS OF CRUSHED STONE BASE FOR REPAIR OF PUBLIC ROADWAY USED FOR CONSTRUCTION ACCESS AND 433 MTONS FOR THE 100mm CSB UNDER CONCRETE ENTRANCE PAVEMENT AND SIDEWALK.
- ⑨ KY 61 URBAN INCLUDES ASPHALT ENTRANCE PAVEMENT BEHIND CONCRETE ENTRANCES.
- ⑩ CARRIED OVER TO GENERAL SUMMARY.

KY 61 (PRESTON HIGHWAY)  
 PAVING AREAS & SUMMARY  
 ASPHALT ALTERNATE

METRIC

COUNTY OF	ITEM NO.	SHEET NO.
BULLITT	5-117.10	R2L

PAVING AREAS - ASPHALT ALTERNATE

ITEM	KY 61 URBAN	KY 61 RURAL	CHERRY STREET	BLUE LICK ROAD	BISHOP LANE	NORTH SIDE AVENUE	HARBOR AVENUE	POINTE BLVD.	CORAL RIDGE ROAD	ACCESS ROAD NO. 1	FRONTAGE ROAD NO. 1	CONESTOGA PKWY.	TEMP. PAVEMENT (MOT)	TOTAL PROJECT
ROADBED PREPARATION														
LIME STABILIZED ROADBED	49,728	19,831										1,274		70,833
TRAFFIC LANES (MAINLINE URBAN & RURAL 1)														
30mm CL3 ASPH SURF 9.5A PG64-22 (A)	49,643	11,879										1,210		62,731
75mm CL3 ASPH BASE 25.0D PG64-22	44,367	11,964										1,213		57,544
95mm CL3 ASPH BASE 25.0D PG64-22	44,367	12,177										1,223		57,767
95mm CL3 ASPH BASE 25.0D PG64-22	49,728	12,447										1,236		63,411
100mm DRAINAGE BLANKET TYPE II ASPHALT	49,728	12,717										1,248		63,693
100mm CSB	49,728	12,717										1,261		63,706
SHOULDERS (URBAN)														
STANDARD CURB AND GUTTER (SEE GENERAL SUMMARY)														
SHOULDERS (RURAL 1)														
30mm CL2 ASPH SURF 9.5D PG64-22	20	6,483			190	258		259						6,503
75mm CL2 ASPH BASE 25.0D PG64.22	20	6,483												6,503
FULL DEPTH CSB (B)	16	4,126												4,142
ASPHALT SEAL COAT	13	3,415												3,428
ASPHALT SEAL AGGREGATE	13	3,415												3,428
TRAFFIC LANES (APPROACH ROADS W/ CURB & GUTTER)														
30mm CL3 ASPH SURF 9.5A PG64-22 (C)			258	932	190	258		259						1,898
75mm CL3 ASPH BASE 25.0D PG64-22			258	518	191	260		259						1,486
95mm CL3 ASPH BASE 25.0D PG64-22			258	519	195	264		259						1,496
200mm CSB			398	691	216	286		312						1,904
TRAFFIC LANES (APPROACH ROADS & TEMPORARY PVMT)														
30mm CL2 ASPH SURF 9.5D PG64-22							119		3,734	1,126	1,307		7,492	13,777
100mm CL2 ASPH BASE 25.0D PG64-22							120		3,764	1,135	1,319		7,572	13,910
200mm CSB							125		3,862	1,167	1,360		7,781	14,294
ENTRANCES														
30mm CL2 ASPH SURF 9.5D PG64-22 (D)	1,351				38				43	111	83			1,625
50mm CL2 ASPH BASE 25.0D PG64-22 (E)	1,360				39				44	112	84			1,638
150mm CSB (F)	1,376				40				45	114	86			1,661

PAVING SUMMARY - ASPHALT ALTERNATE

ITEM CODE	ITEM	UNIT	KY 61 URBAN	KY 61 RURAL	CHERRY STREET	BLUE LICK ROAD	BISHOP LANE	NORTH SIDE AVENUE	HARBOR AVENUE	POINTE BLVD.	CORAL RIDGE ROAD	ACCESS ROAD NO. 1	FRONTAGE ROAD NO. 1	CONESTOGA PKWY.	TEMP. PAVMT. (MOT)	TOTAL PROJECT
0003M	CSB	M TON	13,161	13,675	195	339	121	140	61	153	1,908	614	697	309	3,813	35,186
0013M	LIME STABILIZED ROADBED(TOP 200mm)	SQ M	49,728	19,831										1,274		70,833
0014M	LIME	M TON	1,021	407										26		1,454
0018M	DRAINAGE BLANKET-TYPE II-ASPH	M TON	10,642	2,721										267		13,630
0100M	ASPHALT SEAL AGGREGATE	M TON	1	74												75
0103M	ASPHALT SEAL COAT	M TON		9												9
0212M	CL 2 ASPHALT BASE 25.0D PG64-22	M TON	164	1,143			5		28		889	280	320		1,779	4,608
0214M	CL 3 ASPHALT BASE 25.0D PG64-22	M TON	28,827	7,607	104	207	78	105		104				763		37,795
0301M	CL 2 ASPHALT SURFACE 9.5D PG64-22	M TON	96	457			3		8		266	87	98		528	1,543
22906ES403	CL 3 ASPHALT SURFACE 9.5A PG64-22	M TON	3,500	837	18	66	13	18		18				85		4,555
0358M	ASPHALT CURING SEAL	M TON	54	22										1		77
2702M	SAND FOR BLOTTER	M TON	135	54										3		192
2599M	FABRIC-GEOTEXTILE TY IV	SQ M	49,728	19,831										1,274		70,833

NOTES

ALL ASPHALT MIXTURES SHALL BE ESTIMATED AT 2.35 KG PER SQ. M. PER mm OF DEPTH, UNLESS NOTED OTHERWISE.

- ① ESTIMATED AT 2.45 KG PER SQ. M. PER mm OF DEPTH.
- ② ESTIMATED AT 10.85 KG PER SQ. M. (TWO APPLICATIONS)
- ③ ESTIMATED AT 1.3 KG PER SQ. M. (TWO APPLICATIONS)
- ④ ESTIMATED AT 2.14 KG PER SQ. M. PER mm OF DEPTH
- ⑤ ESTIMATED AT 1.09 KG PER SQ. M.
- ⑥ ESTIMATED AT 2.71 KG PER SQ. M.
- ⑦ MTON (6% BY MASS AT 1711 KG/CU. M.)
- ⑧ INCLUDES 450 MTONS OF CRUSHED STONE BASE FOR REPAIR OF PUBLIC ROADWAY USED FOR CONSTRUCTION ACCESS AND 433 MTONS FOR THE 100mm CSB UNDER CONCRETE ENTRANCE PAVEMENT AND SIDEWALK.
- ⑨ KY 61 URBAN INCLUDES ASPHALT ENTRANCE PAVEMENT BEHIND CONCRETE ENTRANCES.
- ⑩ CARRIED OVER TO GENERAL SUMMARY.

KY 61 (PRESTON HIGHWAY)  
 PAVING AREAS & SUMMARY  
 ASPHALT ALTERNATE

METRIC

COUNTY OF	ITEM NO.	SHEET NO.
BULLITT	5-117.10	R2L

PAVING AREAS - CONCRETE ALTERNATE

ITEM	KY 61 URBAN	KY 61 RURAL	CHERRY STREET	BLUE LICK ROAD	BISHOP LANE	NORTH SIDE AVENUE	HARBOR AVENUE	POINTE BLVD.	CORAL RIDGE ROAD	ACCESS ROAD NO. 1	FRONTAGE ROAD NO. 1	CONESTOGA PKWY.	TEMP. PMT. (MOT)	TOTAL PROJECT
S Q U A R E M E T E R S														
<b>SUBGRADE PREPARATION</b>														
200mm LIME STABILIZED ROADBED	49,728	19,831										1,274		70,833
<b>TRAFFIC LANES (CONESTOGA PKWY.)</b>														
30mm CL3 ASPH SURF 9.5A PG64-22												1,210		1,210
75mm CL3 ASPH BASE 25.0D PG64-22												1,213		1,213
95mm CL3 ASPH BASE 25.0D PG64-22												1,223		1,223
95mm CL3 ASPH BASE 25.0D PG64-22												1,236		1,236
100mm DRAINAGE BLANKET TYPE II ASPHALT												1,248		1,248
100mm CSB												1,261		1,261
<b>TRAFFIC LANES (MAINLINE URBAN &amp; RURAL 1)</b>														
30mm CL3 ASPH SURF 9.5A PG64-22 (A)	5,276													5,276
225mm JPC PAVEMENT - 9 IN	44,367	11,879												56,245
100mm JPC PAVEMENT DRAINAGE BLANKET	44,367	11,879												56,245
100mm CSB	44,367	11,879												56,245
<b>SHOULDERS (MAINLINE - CONCRETE OPTION)</b>														
150mm JPC PAVEMENT - 6 IN SHLD	20	6,483												6,503
FULL DEPTH CSB (FROM CROSS-SECTS, CU. M.) (B)	14	3,742												3,756
ASPHALT SEAL COAT	13	3,415												3,428
ASPHALT SEAL AGGREGATE	13	3,415												3,428
<b>OR</b>														
<b>SHOULDERS (MAINLINE - ASPHALT OPTION)</b>														
30mm CL2 ASPH SURF 9.5D PG64-22	20	6,483												6,503
75mm CL2 ASPH BASE 25.0D PG64-22	20	6,483												6,503
FULL DEPTH CSB (FROM CROSS-SECTS, CU. M.) (B)	16	4,126												4,142
ASPHALT SEAL COAT	13	3,415												3,428
ASPHALT SEAL AGGREGATE	13	3,415												3,428
<b>TRAFFIC LANES (APPROACH ROADS W/ CURB &amp; GUTTER)</b>														
30mm CL3 ASPH SURF 9.5A PG64-22 (C)			258	932	190	258	259							1,898
75mm CL3 ASPH BASE 25.0D PG64-22			258	518	191	260	259							1,486
95mm CL3 ASPH BASE 25.0D PG64-22			258	519	195	264	259							1,496
200mm CSB			398	691	216	286	312							1,904
<b>TRAFFIC LANES (APPROACH ROADS &amp; TEMPORARY PMT)</b>														
30mm CL2 ASPH SURF 9.5D PG64-22								119	3,734	1,126	1,307		7,492	13,777
100mm CL2 ASPH BASE 25.0D PG64-22								120	3,764	1,135	1,319		7,572	13,910
200mm CSB								125	3,862	1,167	1,360		7,781	14,294
<b>ENTRANCES</b>														
30mm CL2 ASPH SURF 9.5D PG64-22 (9)	1,351								43	111	83			1,625
50mm CL2 ASPH BASE 25.0D PG64-22 (9)	1,360								44	112	84			1,638
150mm CSB (9)	1,376								45	114	86			1,661

PAVING SUMMARY - CONCRETE ALTERNATE

ITEM CODE	ITEM	UNIT	KY 61 URBAN	KY 61 RURAL	CHERRY STREET	BLUE LICK ROAD	BISHOP LANE	NORTH SIDE AVENUE	HARBOR AVENUE	POINTE BLVD.	CORAL RIDGE ROAD	ACCESS ROAD NO. 1	FRONTAGE ROAD NO. 1	CONESTOGA PKWY.	TEMP. PMT. (MOT)	TOTAL PROJECT
0003M	CSB (1)(8)	M TON	11,809	3,379	195	339	121	140	61	153	1,908	614	697	309	3,813	23,538
0013M	LIME STABILIZED ROADBED (TOP 200mm)	SQ M	49,728	19,831										1,274		70,833
0014M	LIME (7)	M TON	1,021	407										26		1,454
0018M	DRAINAGE BLANKET-TYPE II-ASPH(4)	M TON	9,494	2,542										267		12,303
0100M	ASPHALT SEAL AGGREGATE (2)	M TON	1	74												75
0103M	ASPHALT SEAL COAT (3)	M TON	-	9												9
0212M	CLASS 2 ASPHALT BASE 25.0D PG64-22	M TON	164	1,143			5		28		889	280	320		1,779	4,608
0214M	CLASS 3 ASPHALT BASE 25.0D PG64-22	M TON			104	207	78	105	104		266		98	763		1,361
0301M	CLASS 2 ASPHALT SURF 9.5D PG64-22	M TON	96	457			3		8						528	1,543
22906ES403	CLASS 3 ASPHALT SURF 9.5A PG64-22	M TON	372		18	66	13	18	18					85		590
0358M	ASPHALT CURING SEAL (5)	M TON	54	22										1		77
2702M	SAND FOR BLOTTER (6)	M TON	135	54										3		192
02073M	JPC PAVEMENT - 9 IN	SQ M	44,367	11,879												56,245
02075M	JPC PAVEMENT - 6 IN SHLD	SQ M	20	6,483												6,503
02599M	FABRIC-GEOTEXTILE TYPE IV (10)	SQ M	49,728	19,831										1,274		70,833

NOTES

ALL ASPHALT MIXTURES SHALL BE ESTIMATED AT 2.35 KG PER SQ. M. PER mm OF DEPTH, UNLESS NOTED OTHERWISE.

- (1) ESTIMATED AT 2.45 KG PER SQ. M. PER mm OF DEPTH.
- (2) ESTIMATED AT 10.85 KG PER SQ. M. (TWO APPLICATIONS)
- (3) ESTIMATED AT 1.3 KG PER SQ. M. (TWO APPLICATIONS)
- (4) ESTIMATED AT 2.14 KG PER SQ. M. PER mm OF DEPTH
- (5) ESTIMATED AT 1.09 KG PER SQ. M.
- (6) ESTIMATED AT 2.71 KG PER SQ. M.
- (7) MTON (6% BY MASS AT 1711 KG/CU. M.)
- (8) INCLUDES 450 MTONS OF CSB FOR REPAIR OF PUBLIC ROADWAY USED FOR CONSTRUCTION ACCESS AND 433 MTON FOR THE 100mm CSB UNDER CONCRETE ENTRANCE PAVEMENT AND SIDEWALK.
- (9) KY 61 URBAN INCLUDES ASPHALT ENTRANCE PAVEMENT BEHIND CONCRETE ENTRANCES.
- (10) CARRIED OVER TO GENERAL SUMMARY.

KY 61 (PRESTON HIGHWAY) PAVING AREAS & SUMMARY CONCRETE ALTERNATE

METRIC

PAVING AREAS - CONCRETE ALTERNATE

ITEM	SUBGRADE PREPARATION	S Q U A R E M E T E R S											TOTAL PROJECT			
		KY 61 URBAN	KY 61 RURAL	CHERRY STREET	BLUE LICK ROAD	BISHOP LANE	NORTH SIDE AVENUE	HARBOR AVENUE	POINTE BLVD.	CORAL RIDGE ROAD	ACCESS ROAD NO. 1	FRONTAGE ROAD NO. 1		CONESTOGA PKWY.	TEMP. PMT. (MOT)	
200mm LIME STABILIZED ROADBED		49,728	19,831										1,274			70,833
TRAFFIC LANES (CONESTOGA PKWY.)																
30mm CL3 ASPH SURF 9.5A PG64-22													1,210			1,210
75mm CL3 ASPH BASE 25.0D PG64-22													1,213			1,213
95mm CL3 ASPH BASE 25.0D PG64-22													1,223			1,223
95mm CL3 ASPH BASE 25.0D PG64-22													1,236			1,236
100mm DRAINAGE BLANKET TYPE II ASPHALT													1,248			1,248
100mm CSB													1,261			1,261
TRAFFIC LANES (MAINLINE URBAN & RURAL 1)																
30mm CL3 ASPH SURF 9.5A PG64-22	Ⓐ	5,276														5,276
225mm JPC PAVEMENT - 9 IN		44,367	11,879													56,245
100mm JPC PAVEMENT DRAINAGE BLANKET		44,367	11,879													56,245
100mm CSB		44,367	11,879													56,245
SHOULDERS (MAINLINE - CONCRETE OPTION)																
150mm JPC PAVEMENT - 6 IN SHLD		20	6,483													6,503
FULL DEPTH CSB (FROM CROSS-SECTS, CU. M.)	Ⓑ	14	3,742													3,756
ASPHALT SEAL COAT		13	3,415													3,428
ASPHALT SEAL AGGREGATE		13	3,415													3,428
OR																
SHOULDERS (MAINLINE - ASPHALT OPTION)																
30mm CL2 ASPH SURF 9.5D PG64-22		20	6,483													6,503
75mm CL2 ASPH BASE 25.0D PG64-22		20	6,483													6,503
FULL DEPTH CSB (FROM CROSS-SECTS, CU. M.)	Ⓑ	16	4,126													4,142
ASPHALT SEAL COAT		13	3,415													3,428
ASPHALT SEAL AGGREGATE		13	3,415													3,428
TRAFFIC LANES (APPROACH ROADS W/ CURB & GUTTER)																
30mm CL3 ASPH SURF 9.5A PG64-22	Ⓒ			258	932	190	258							259		1,898
75mm CL3 ASPH BASE 25.0D PG64-22				258	518	191	260							259		1,486
95mm CL3 ASPH BASE 25.0D PG64-22				258	519	195	264							259		1,496
200mm CSB				398	691	216	286							312		1,904
TRAFFIC LANES (APPROACH ROADS & TEMPORARY PMT)																
30mm CL2 ASPH SURF 9.5D PG64-22								119					3,734	1,126	1,307	7,492
100mm CL2 ASPH BASE 25.0D PG64-22								120					3,764	1,135	1,319	7,572
200mm CSB								125					3,862	1,167	1,360	7,781
ENTRANCES																
30mm CL2 ASPH SURF 9.5D PG64-22	Ⓓ	1,351								38			43	111	83	1,625
50mm CL2 ASPH BASE 25.0D PG64-22	Ⓓ	1,360								39			44	112	84	1,638
150mm CSB	Ⓔ	1,376								40			45	114	86	1,661

PAVING SUMMARY - CONCRETE ALTERNATE

ITEM CODE	ITEM	UNIT	KY 61 URBAN	KY 61 RURAL	CHERRY STREET	BLUE LICK ROAD	BISHOP LANE	NORTH SIDE AVENUE	HARBOR AVENUE	POINTE BLVD.	CORAL RIDGE ROAD	ACCESS ROAD NO. 1	FRONTAGE ROAD NO. 1	CONESTOGA PKWY.	TEMP. PMT. (MOT)	TOTAL PROJECT
0003M	CSB	① ⑧ M TON	11,809	3,379	195	339	121	140	61	153	1,908	614	697	309	3,813	23,538
0013M	LIME STABILIZED ROADBED (TOP 200mm)	SQ M	49,728	19,831										1,274		70,833
0014M	LIME	⑦ M TON	1,021	407										26		1,454
0018M	DRAINAGE BLANKET-TYPE II-ASPH	④ M TON	9,494	2,542										267		12,303
0100M	ASPHALT SEAL AGGREGATE	② M TON	1	74												75
0103M	ASPHALT SEAL COAT	③ M TON	-	9												9
0212M	CLASS 2 ASPHALT BASE 25.0D PG64-22	M TON	164	1,143			5		28		889	280	320		1,779	4,608
0214M	CLASS 3 ASPHALT BASE 25.0D PG64-22	M TON			104	207	78	105	104		266	87	98	763		1,361
0301M	CLASS 2 ASPHALT SURF 9.5D PG64-22	M TON	96	457			3		8						528	1,543
22906ES403	CLASS 3 ASPHALT SURF 9.5A PG64-22	M TON	372		18	66	13	18	18					85		590
0358M	ASPHALT CURING SEAL	⑤ M TON	54	22										1		77
2702M	SAND FOR BLOTTER	⑥ M TON	135	54										3		192
02073M	JPC PAVEMENT - 9 IN	SQ M	44,367	11,879												56,245
02075M	JPC PAVEMENT - 6 IN SHLD	SQ M	20	6,483												6,503
02599M	FABRIC-GEOTEXTILE TYPE IV	⑩ SQ M	49,728	19,831										1,274		70,833

NOTES

ALL ASPHALT MIXTURES SHALL BE ESTIMATED AT 2.35 KG PER SQ. M. PER mm OF DEPTH, UNLESS NOTED OTHERWISE.

- ① ESTIMATED AT 2.45 KG PER SQ. M. PER mm OF DEPTH.
- ② ESTIMATED AT 10.85 KG PER SQ. M. (TWO APPLICATIONS)
- ③ ESTIMATED AT 1.3 KG PER SQ. M. (TWO APPLICATIONS)
- ④ ESTIMATED AT 2.14 KG PER SQ. M. PER mm OF DEPTH
- ⑤ ESTIMATED AT 1.09 KG PER SQ. M.
- ⑥ ESTIMATED AT 2.71 KG PER SQ. M.
- ⑦ MTON (6% BY MASS AT 1711 KG/CU. M.)
- ⑧ INCLUDES 450 MTONS OF CSB FOR REPAIR OF PUBLIC ROADWAY USED FOR CONSTRUCTION ACCESS AND 433 MTON FOR THE 100mm CSB UNDER CONCRETE ENTRANCE PAVEMENT AND SIDEWALK.
- ⑨ KY 61 URBAN INCLUDES ASPHALT ENTRANCE PAVEMENT BEHIND CONCRETE ENTRANCES.
- ⑩ CARRIED OVER TO GENERAL SUMMARY.

KY 61 (PRESTON HIGHWAY) PAVING AREAS & SUMMARY CONCRETE ALTERNATE

METRIC

PAVING AREAS - ASPHALT ALTERNATE

ITEM	S Q U A R E Y A R D S										TEMP. PAVEMENT (MOT)	TOTAL PROJECT	
	KY 61 RURAL 1 TO STA. 5+00	KY 61 RURAL 2 FROM STA. 5+00	FRONTAGE ROAD NO. 1	NORTH VIEW DRIVE	APPROACH ROAD NO. 1	APPROACH ROAD NO. 2	FRONTAGE ROAD NO. 2	BECNEL DRIVE	HILL BROOK DRIVE	EXIST. KY 61 RE-BUILD			CONESTOGA PARKWAY
① QUANTITY SHOWN IN CUBIC YARDS													
ROADBED PREPARATION													
24.00" ROCK ROADBED ①		44,270											40,481
FABRIC-GEOTEXTILE TYPE IV	16,126	96,128											112,254
8.00" LIME STABILIZED ROADBED	18,203												18,203
TRAFFIC LANES (MAINLINE RURAL 1)													
1.25" CL3 ASPH SURF 0.38A PG64-22	15,104												15,104
3.00" CL3 ASPH BASE 1.00D PG64-22	15,208												15,208
3.75" CL3 ASPH BASE 1.00D PG64-22	15,468												15,468
3.75" CL3 ASPH BASE 1.00D PG64-22	15,797												15,797
4.00" DRAINAGE BLANKET TYPE II ASPHALT	16,126												16,126
4.00" CSB	16,126												16,126
TRAFFIC LANES (MAINLINE RURAL 2)													
1.25" CL3 ASPH SURF 0.38B PG64-22		30,805											30,805
3.00" CL3 ASPH BASE 1.00D PG64-22		31,007											31,007
3.00" CL3 ASPH BASE 1.00D PG64-22		31,513											31,513
3.25" CL3 ASPH BASE 1.00D PG64-22		32,019											32,019
4.00" CRUSHED STONE BASE		32,558											32,558
SHOULDERS (MAINLINE RURAL 1 & RURAL 2)													
1.25" CL2 ASPH SURF 0.38D PG64-22	7,071	14,953											22,024
3.00" CL2 ASPH BASE 1.00D PG64.22	7,071	14,953											22,024
FULL DEPTH CSB ④	5,491												5,021
FULL DEPTH CRUSHED STONE BASE ④	4,155	8,099	10,703										9,787
ASPHALT SEAL COAT	4,155	8,099											12,254
ASPHALT SEAL AGGREGATE	4,155	8,099											12,254
TRAFFIC LANES (APPROACH ROADS & TEMPORARY PWMT)													
1.25" CL2 ASPH SURF 0.38D PG64-22		5,640	225	99	1,735	684	1,353	274	1,261				8,640
4.00" CL2 ASPH BASE 1.00D PG64.22		5,689	227	100	1,751	691	1,363	276	1,270				8,718
8.00" CSB		5,856	236	104	1,802	715	1,403	282	1,302				8,829
ENTRANCES													
1.25" CL2 ASPH SURF 0.38D PG64-22	41	197	171							69	648		1,275
2.00" CL2 ASPH BASE 1.00D PG64-22	41	199	175							71	652		1,290
6.00" CSB	42	200	179							73	659		1,309

PAVING SUMMARY - ASPHALT ALTERNATE

ITEM CODE	ITEM	UNIT	KY 61 RURAL 1 TO STA. 5+00	KY 61 RURAL 2 FROM STA. 5+00	FRONTAGE ROAD NO. 1	NORTH VIEW DRIVE	APPROACH ROAD NO. 1	APPROACH ROAD NO. 2	FRONTAGE ROAD NO. 2	BECNEL DRIVE	HILL BROOK DRIVE	EXIST. KY 61 RE-BUILD	CONESTOGA PARKWAY	TEMP. PAVEMENT (MOT)	TOTAL PROJECT
0003	CRUSHED STONE BASE ①⑧	TON	15,489	29,519	2,705	107	47	814	363	647	128	613	223	3,987	54,642
0013	LIME STABILIZED ROADBED(TOP 8 IN)	SQ YD	18,203												18,203
0014	LIME ⑦	TON	344												344
0018	DRAINAGE BLANKET-TYPE II-ASPH ④	TON	3,180												3,180
0100	ASPHALT SEAL AGGREGATE ②	TON	83	162											245
0103	ASPHALT SEAL COAT ⑤	TON	10	20											30
0212	CL 2 ASPHALT BASE 1.00D PG64-22	TON	1,153	2,452	1,251	50	22	379	162	300	60	283	71	1,888	8,071
0214	CL 3 ASPHALT BASE 1.00D PG64-22	TON	8,903	15,704											24,607
0301	CL 2 ASPHALT SURFACE 0.38D PG64-22	TON	462	984	377	14	7	112	52	90	18	86	42	671	2,915
22906ES403	CL 3 ASPHALT SURFACE 0.38A PG64-22	TON	981												981
0388	CL 3 ASPHALT SURFACE 0.38B PG64-22	TON		2,002											2,002
0358	ASPHALT CURING SEAL ⑤	TON	19												19
2702	SAND FOR BLOTTER ⑥	TON	45												45
02599	FABRIC-GEOTEXTILE TY IV ⑩	SQ YD	16,126	96,128											112,254

NOTES

- ALL ASPHALT MIXTURES SHALL BE ESTIMATED AT 110 LBS. PER SQ. YD. PER INCH OF DEPTH, UNLESS NOTED OTHERWISE.
- ① ESTIMATED AT 115 LBS. PER SQ. YD. PER INCH OF DEPTH.
  - ② ESTIMATED AT 20 LBS. PER SQ. YD. (TWO APPLICATIONS)
  - ③ ESTIMATED AT 2.4 LBS. PER SQ. YD. (TWO APPLICATIONS)
  - ④ ESTIMATED AT 100 LBS. PER SQ. YD. PER INCH OF DEPTH.
  - ⑤ ESTIMATED AT 2.0 LBS. PER SQ. YD.
  - ⑥ ESTIMATED AT 5.0 LBS. PER SQ. YD.
  - ⑦ ESTIMATED AT 6% BY MASS AT 106 LBS. PER CU. FT.
  - ⑧ INCLUDES 496 TONS OF CRUSHED STONE BASE FOR REPAIR OF PUBLIC ROADWAY USED FOR CONSTRUCTION ACCESS OR OTHER MISCELLANEOUS USES.
  - ⑨ FABRIC ON TOP OF LSR IN KY 61 RURAL 1 SECTION, ON TOP OF RR AND ON TOP & BOTTOM OF RR IN FILLS IN KY 61 RURAL 2 SECTION.
  - ⑩ CARRIED OVER TO GENERAL SUMMARY.

KY 61 (PRESTON HIGHWAY) PAVING AREAS & SUMMARY ASPHALT ALTERNATE

PAVING AREAS - ASPHALT ALTERNATE

ITEM	S Q U A R E Y A R D S										TEMP. PAVEMENT (MOT)	TOTAL PROJECT	
	KY 61 RURAL 1 TO STA. 5+00	KY 61 RURAL 2 FROM STA. 5+00	FRONTAGE ROAD NO. 1	NORTH VIEW DRIVE	APPROACH ROAD NO. 1	APPROACH ROAD NO. 2	FRONTAGE ROAD NO. 2	BECNEL DRIVE	HILL BROOK DRIVE	EXIST. KY 61 RE-BUILD			CONESTOGA PARKWAY
① QUANTITY SHOWN IN CUBIC YARDS													
ROADBED PREPARATION													
24.00" ROCK ROADBED ①		44,270											40,481
FABRIC-GEOTEXTILE TYPE IV	16,126	96,128											112,254
8.00" LIME STABILIZED ROADBED	18,203												18,203
TRAFFIC LANES (MAINLINE RURAL 1)													
1.25" CL3 ASPH SURF 0.38A PG64-22	15,104												15,104
3.00" CL3 ASPH BASE 1.00D PG64-22	15,208												15,208
3.75" CL3 ASPH BASE 1.00D PG64-22	15,468												15,468
3.75" CL3 ASPH BASE 1.00D PG64-22	15,797												15,797
4.00" DRAINAGE BLANKET TYPE II ASPHALT	16,126												16,126
4.00" CSB	16,126												16,126
TRAFFIC LANES (MAINLINE RURAL 2)													
1.25" CL3 ASPH SURF 0.38B PG64-22		30,805											30,805
3.00" CL3 ASPH BASE 1.00D PG64-22		31,007											31,007
3.00" CL3 ASPH BASE 1.00D PG64-22		31,513											31,513
3.25" CL3 ASPH BASE 1.00D PG64-22		32,019											32,019
4.00" CRUSHED STONE BASE		32,558											32,558
SHOULDERS (MAINLINE RURAL 1 & RURAL 2)													
1.25" CL2 ASPH SURF 0.38D PG64-22	7,071	14,953											22,024
3.00" CL2 ASPH BASE 1.00D PG64.22	7,071	14,953											22,024
FULL DEPTH CSB ④	5,491												5,021
FULL DEPTH CRUSHED STONE BASE ④	4,155	8,099	10,703										9,787
ASPHALT SEAL COAT	4,155	8,099											12,254
ASPHALT SEAL AGGREGATE	4,155	8,099											12,254
TRAFFIC LANES (APPROACH ROADS & TEMPORARY PWMT)													
1.25" CL2 ASPH SURF 0.38D PG64-22		5,640	225	99	1,735	684	1,353	274	1,261				8,640
4.00" CL2 ASPH BASE 1.00D PG64.22		5,689	227	100	1,751	691	1,363	276	1,270				8,718
8.00" CSB		5,856	236	104	1,802	715	1,403	282	1,302				20,529
ENTRANCES													
1.25" CL2 ASPH SURF 0.38D PG64-22	41	197	171							69	648		1,275
2.00" CL2 ASPH BASE 1.00D PG64-22	41	199	175							71	652		1,290
6.00" CSB	42	200	179							73	659		1,309

PAVING SUMMARY - ASPHALT ALTERNATE

ITEM CODE	ITEM	UNIT	KY 61 RURAL 1 TO STA. 5+00	KY 61 RURAL 2 FROM STA. 5+00	FRONTAGE ROAD NO. 1	NORTH VIEW DRIVE	APPROACH ROAD NO. 1	APPROACH ROAD NO. 2	FRONTAGE ROAD NO. 2	BECNEL DRIVE	HILL BROOK DRIVE	EXIST. KY 61 RE-BUILD	CONESTOGA PARKWAY	TEMP. PAVEMENT (MOT)	TOTAL PROJECT
0003	CRUSHED STONE BASE ①⑧	TON	15,489	29,519	2,705	107	47	814	363	647	128	613	223	3,987	54,642
0013	LIME STABILIZED ROADBED(TOP 8 IN)	SQ YD	18,203												18,203
0014	LIME ⑦	TON	344												344
0018	DRAINAGE BLANKET-TYPE II-ASPH ④	TON	3,180												3,180
0100	ASPHALT SEAL AGGREGATE ②	TON	83	162											245
0103	ASPHALT SEAL COAT ⑤	TON	10	20											30
0212	CL 2 ASPHALT BASE 1.00D PG64-22	TON	1,153	2,452	1,251	50	22	379	162	300	60	283	71	1,888	8,071
0214	CL 3 ASPHALT BASE 1.00D PG64-22	TON	8,903	15,704											24,607
0301	CL 2 ASPHALT SURFACE 0.38D PG64-22	TON	462	984	377	14	7	112	52	90	18	86	42	671	2,915
22906ES403	CL 3 ASPHALT SURFACE 0.38A PG64-22	TON	981												981
0388	CL 3 ASPHALT SURFACE 0.38B PG64-22	TON		2,002											2,002
0358	ASPHALT CURING SEAL ⑤	TON	19												19
2702	SAND FOR BLOTTER ⑥	TON	45												45
02599	FABRIC-GEOTEXTILE TY IV ⑩	SQ YD	16,126	96,128											112,254

NOTES

- ALL ASPHALT MIXTURES SHALL BE ESTIMATED AT 110 LBS. PER SQ. YD. PER INCH OF DEPTH, UNLESS NOTED OTHERWISE.
- ① ESTIMATED AT 115 LBS. PER SQ. YD. PER INCH OF DEPTH.
  - ② ESTIMATED AT 20 LBS. PER SQ. YD. (TWO APPLICATIONS)
  - ③ ESTIMATED AT 2.4 LBS. PER SQ. YD. (TWO APPLICATIONS)
  - ④ ESTIMATED AT 100 LBS. PER SQ. YD. PER INCH OF DEPTH.
  - ⑤ ESTIMATED AT 2.0 LBS. PER SQ. YD.
  - ⑥ ESTIMATED AT 5.0 LBS. PER SQ. YD.
  - ⑦ ESTIMATED AT 6% BY MASS AT 106 LBS. PER CU. FT.
  - ⑧ INCLUDES 496 TONS OF CRUSHED STONE BASE FOR REPAIR OF PUBLIC ROADWAY USED FOR CONSTRUCTION ACCESS OR OTHER MISCELLANEOUS USES.
  - ⑨ FABRIC ON TOP OF LSR IN KY 61 RURAL 1 SECTION, ON TOP OF RR AND ON TOP & BOTTOM OF RR IN FILLS IN KY 61 RURAL 2 SECTION.
  - ⑩ CARRIED OVER TO GENERAL SUMMARY.

KY 61 (PRESTON HIGHWAY) PAVING AREAS & SUMMARY ASPHALT ALTERNATE

ENGLISH

PAVING AREAS - ASPHALT ALTERNATE

ITEM	KY 61 URBAN	KY 61 RURAL	CHERRY STREET	BLUE LICK ROAD	BISHOP LANE	NORTH SIDE AVENUE	HARBOR AVENUE	POINTE BLVD.	CORAL RIDGE ROAD	ACCESS ROAD NO. 1	FRONTAGE ROAD NO. 1	CONESTOGA PKWY.	TEMP. PAVEMENT (MOT)	TOTAL PROJECT
ROADBED PREPARATION														
LIME STABILIZED ROADBED	59,474	23,717										1,524		84,715
TRAFFIC LANES (MAINLINE URBAN & RURAL 1)														
1.25" CL3 ASPH SURF 0.38A PG64-22	59,372	14,206										1,447		75,025
3.00" CL3 ASPH BASE 1.00D PG64-22	53,062	14,309										1,451		68,822
3.75" CL3 ASPH BASE 1.00D PG64-22	53,062	14,563										1,463		69,088
3.75" CL3 ASPH BASE 1.00D PG64-22	59,474	14,886										1,478		75,838
4.00" DRAINAGE BLANKET TYPE II ASPHALT	59,474	15,209										1,492		76,175
4.00" CSB	59,474	15,209										1,508		76,191
SHOULDERS (URBAN)														
STANDARD CURB AND GUTTER (LIN. FT.) (SEE GEN SUM)														
SHOULDERS (RURAL 1)														
1.25" CL2 ASPH SURF 0.38D PG64-22	24	7,754												7,778
3.00" CL2 ASPH BASE 1.00D PG64-22	24	7,754												7,778
FULL DEPTH CSB	21	5,397												5,418
ASPHALT SEAL COAT	16	4,084												4,100
ASPHALT SEAL AGGREGATE	16	4,084												4,100
TRAFFIC LANES (APPROACH ROADS W/ CURB & GUTTER)														
1.25" CL3 ASPH SURF 0.38A PG64-22			309	1,114	227	309		310						2,269
3.00" CL3 ASPH BASE 1.00D PG64-22			309	619	228	311		310						1,777
3.75" CL3 ASPH BASE 1.00D PG64-22			309	621	233	316		310						1,789
8.00" CSB			476	827	258	343		373						2,277
TRAFFIC LANES (APPROACH ROADS & TEMPORARY PVMT)														
1.25" CL2 ASPH SURF 0.38D PG64-22							142		4,466	1,346	1,563		8,960	16,477
4.00" CL2 ASPH BASE 1.00D PG64-22							143		4,502	1,357	1,578		9,056	16,636
8.00" CSB							149		4,619	1,395	1,626		9,306	17,095
ENTRANCES														
1.25" CL2 ASPH SURF 0.38D PG64-22	1,616				45				52	132	99			1,944
2.00" CL2 ASPH BASE 1.00D PG64-22	1,627				46				52	134	100			1,959
6.00" CSB	1,645				48				54	137	102			1,986

PAVING SUMMARY - ASPHALT ALTERNATE

ITEM CODE	ITEM	UNIT	KY 61 URBAN	KY 61 RURAL	CHERRY STREET	BLUE LICK ROAD	BISHOP LANE	NORTH SIDE AVENUE	HARBOR AVENUE	POINTE BLVD.	CORAL RIDGE ROAD	ACCESS ROAD NO. 1	FRONTAGE ROAD NO. 1	CONESTOGA PKWY.	TEMP. PAVEMENT (MOT)	TOTAL PROJECT
0003	CSB	① ⑧ TON	14,508	15,074	215	374	133	154	67	169	2,103	677	768	341	4,203	38,786
0013	LIME STABILIZED ROADBED(TOP 8 IN)	SQ YD	59,474	23,717										1,524		84,715
0014	LIME	⑦ TON	1,125	449										29		1,603
0018	DRAINAGE BLANKET-TYPE II-ASPH	④ TON	11,731	2,999										294		15,024
0100	ASPHALT SEAL AGGREGATE	② TON	1	82												83
0103	ASPHALT SEAL COAT	③ TON		10												10
0212	CL 2 ASPHALT BASE 1.00D PG64-22	TON	181	1,260			5		31		980	308	353		1,961	5,079
0214	CL 3 ASPHALT BASE 1.00D PG64-22	TON	31,776	8,385	115	228	86	116		115			108	841		41,662
0301	CL 2 ASPHALT SURFACE 0.38D PG64-22	TON	106	504			3		9		293	96			582	1,701
22906ES403	CL 3 ASPHALT SURFACE 0.38A PG64-22	TON	3,858	922	20	73	14	20		20				94		5,021
0358	ASPHALT CURING SEAL	⑤ TON	60	24										1		85
2702	SAND FOR BLOTTER	⑥ TON	149	60										3		212
2599	FABRIC-GEOTEXTILE TY IV	⑩ SQ YD	59,474	23,717										1,524		84,715

NOTES

- ALL ASPHALT MIXTURES SHALL BE ESTIMATED AT 110 LBS. PER SQ. YD. PER INCH OF DEPTH, UNLESS NOTED OTHERWISE.
- ① ESTIMATED AT 115 LBS. PER SQ. YD. PER INCH OF DEPTH.
  - ② ESTIMATED AT 20 LBS. PER SQ. YD. (TWO APPLICATIONS)
  - ③ ESTIMATED AT 2.4 LBS. PER SQ. YD. (TWO APPLICATIONS)
  - ④ ESTIMATED AT 100 LBS. PER SQ. YD. PER INCH OF DEPTH.
  - ⑤ ESTIMATED AT 2.0 LBS. PER SQ. YD.
  - ⑥ ESTIMATED AT 5.0 LBS. PER SQ. YD.
  - ⑦ ESTIMATED AT 6% BY MASS AT 106 LBS. PER CU. FT.
  - ⑧ INCLUDES 496 TONS OF CRUSHED STONE BASE FOR REPAIR OF PUBLIC ROADWAY USED FOR CONSTRUCTION ACCESS AND 477 TONS FOR THE 4 INCHES OF CRUSHED STONE BASE UNDER THE CONCRETE ENTRANCE PAVEMENT AND SIDEWALK.
  - ⑨ KY 61 URBAN INCLUDES ASPHALT ENTRANCE PAVEMENT BEHIND CONCRETE ENTRANCES.
  - ⑩ CARRIED OVER TO GENERAL SUMMARY.

KY 61 (PRESTON HIGHWAY)  
 PAVING AREAS & SUMMARY  
 ASPHALT ALTERNATE



PAVING AREAS - ASPHALT ALTERNATE

ITEM	KY 61 URBAN	KY 61 RURAL	CHERRY STREET	BLUE LICK ROAD	BISHOP LANE	NORTH SIDE AVENUE	HARBOR AVENUE	POINTE BLVD.	CORAL RIDGE ROAD	ACCESS ROAD NO. 1	FRONTAGE ROAD NO. 1	CONESTOGA PKWY.	TEMP. PAVEMENT (MOT)	TOTAL PROJECT
ROADBED PREPARATION	59,474	23,717										1,524		84,715
LIME STABILIZED ROADBED														
TRAFFIC LANES (MAINLINE URBAN & RURAL 1)														
1.25" CL3 ASPH SURF 0.38A PG64-22 (A)	59,372	14,206										1,447		75,025
3.00" CL3 ASPH BASE 1.00D PG64-22	53,062	14,309										1,451		68,822
3.75" CL3 ASPH BASE 1.00D PG64-22	53,062	14,563										1,463		69,088
3.75" CL3 ASPH BASE 1.00D PG64-22	59,474	14,886										1,478		75,838
4.00" DRAINAGE BLANKET TYPE II ASPHALT	59,474	15,209										1,492		76,175
4.00" CSB	59,474	15,209										1,508		76,191
SHOULDERS (URBAN)														
STANDARD CURB AND GUTTER (LIN. FT.) (SEE GEN SUM)														
SHOULDERS (RURAL 1)														
1.25" CL2 ASPH SURF 0.38D PG64-22	24	7,754												7,778
3.00" CL2 ASPH BASE 1.00D PG64-22	24	7,754												7,778
FULL DEPTH CSB (B)	21	5,397												5,418
ASPHALT SEAL COAT	16	4,084												4,100
ASPHALT SEAL AGGREGATE	16	4,084												4,100
TRAFFIC LANES (APPROACH ROADS W/ CURB & GUTTER)														
1.25" CL3 ASPH SURF 0.38A PG64-22 (C)			309	1,114	227	309								2,269
3.00" CL3 ASPH BASE 1.00D PG64-22			309	619	228	311								1,777
3.75" CL3 ASPH BASE 1.00D PG64-22			309	621	233	316								1,789
8.00" CSB			476	827	258	343								2,277
TRAFFIC LANES (APPROACH ROADS & TEMPORARY PVMT)														
1.25" CL2 ASPH SURF 0.38D PG64-22							142			4,466	1,346		8,960	16,477
4.00" CL2 ASPH BASE 1.00D PG64-22							143			4,502	1,357		9,056	16,636
8.00" CSB							149			4,619	1,395		9,306	17,095
ENTRANCES														
1.25" CL2 ASPH SURF 0.38D PG64-22 (D)	1,616				45					52	132			1,944
2.00" CL2 ASPH BASE 1.00D PG64-22 (E)	1,627				46					52	134			1,959
6.00" CSB (F)	1,645				48					54	137			1,986

PAVING SUMMARY - ASPHALT ALTERNATE

ITEM CODE	ITEM	UNIT	KY 61 URBAN	KY 61 RURAL	CHERRY STREET	BLUE LICK ROAD	BISHOP LANE	NORTH SIDE AVENUE	HARBOR AVENUE	POINTE BLVD.	CORAL RIDGE ROAD	ACCESS ROAD NO. 1	FRONTAGE ROAD NO. 1	CONESTOGA PKWY.	TEMP. PAVEMENT (MOT)	TOTAL PROJECT
0003	CSB (1)(B)	TON	14,508	15,074	215	374	133	154	67	169	2,103	677	768	341	4,203	38,786
0013	LIME STABILIZED ROADBED(TOP 8 IN)	SQ YD	59,474	23,717										1,524		84,715
0014	LIME (7)	TON	1,125	449										29		1,603
0018	DRAINAGE BLANKET-TYPE II-ASPH (4)	TON	11,731	2,999										294		15,024
0100	ASPHALT SEAL AGGREGATE (2)	TON	1	82												83
0103	ASPHALT SEAL COAT (3)	TON		10												10
0212	CL 2 ASPHALT BASE 1.00D PG64-22	TON	181	1,260			5		31		980	308	353		1,961	5,079
0214	CL 3 ASPHALT BASE 1.00D PG64-22	TON	31,776	8,385	115	228	86	116		115	293	96	108	841	582	41,662
0301	CL 2 ASPHALT SURFACE 0.38D PG64-22	TON	106	504	20	73	14	20	9	20				94		1,701
22906ES403	CL 3 ASPHALT SURFACE 0.38A PG64-22	TON	3,858	922	20											5,021
0358	ASPHALT CURING SEAL (5)	TON	60	24										1		85
2702	SAND FOR BLOTTER (6)	TON	149	60										3		212
2599	FABRIC-GEOTEXTILE TY IV (11)	SQ YD	59,474	23,717										1,524		84,715

NOTES

- ALL ASPHALT MIXTURES SHALL BE ESTIMATED AT 110 LBS. PER SQ. YD. PER INCH OF DEPTH, UNLESS NOTED OTHERWISE.
- (1) ESTIMATED AT 115 LBS. PER SQ. YD. PER INCH OF DEPTH.
  - (2) ESTIMATED AT 20 LBS. PER SQ. YD. (TWO APPLICATIONS)
  - (3) ESTIMATED AT 2.4 LBS. PER SQ. YD. (TWO APPLICATIONS)
  - (4) ESTIMATED AT 100 LBS. PER SQ. YD. PER INCH OF DEPTH.
  - (5) ESTIMATED AT 2.0 LBS. PER SQ. YD.
  - (6) ESTIMATED AT 5.0 LBS. PER SQ. YD.
  - (7) ESTIMATED AT 6% BY MASS AT 106 LBS. PER CU. FT.
  - (8) INCLUDES 496 TONS OF CRUSHED STONE BASE FOR REPAIR OF PUBLIC ROADWAY USED FOR CONSTRUCTION ACCESS AND 477 TONS FOR THE 4 INCHES OF CRUSHED STONE BASE UNDER THE CONCRETE ENTRANCE PAVEMENT AND SIDEWALK.
  - (9) KY 61 URBAN INCLUDES ASPHALT ENTRANCE PAVEMENT BEHIND CONCRETE ENTRANCES.
  - (11) CARRIED OVER TO GENERAL SUMMARY.

KY 61 (PRESTON HIGHWAY)  
 PAVING AREAS & SUMMARY  
 ASPHALT ALTERNATE

COUNTY OF	ITEM NO.	SHEET NO.
BULLITT	5-117.10	R2N

PAVING AREAS - CONCRETE ALTERNATE

ITEM	KY 61 URBAN	KY 61 RURAL	CHERRY STREET	BLUE LICK ROAD	BISHOP LANE	NORTH SIDE AVENUE	HARBOR AVENUE	POINTE BLVD.	CORAL RIDGE ROAD	ACCESS ROAD NO. 1	FRONTAGE ROAD NO. 1	CONESTOGA PKWY.	TEMP. PMT. (MOT)	TOTAL PROJECT
	59,474	23,717										1,524		84,715

SUBGRADE PREPARATION	Q	S	Q	U	A	R	E	Y	A	R	D	S		
8.00" LIME STABILIZED ROADBED														
TRAFFIC LANES (CONESTOGA PKWY.)														
1.25" CL3 ASPH SURF 0.38A PG64-22												1,447		1,447
3.00" CL3 ASPH BASE 1.00D PG64-22												1,451		1,451
3.75" CL3 ASPH BASE 1.00D PG64-22												1,463		1,463
3.75" CL3 ASPH BASE 1.00D PG64-22												1,478		1,478
4.00" DRAINAGE BLANKET TYPE II ASPHALT												1,492		1,492
4.00" CSB												1,508		1,508
TRAFFIC LANES (MAINLINE URBAN & RURAL 1)														
1.25" CL3 ASPH SURF 0.38A PG64-22 (A)	6,310													6,310
9.00" JPC PAVEMENT	53,061	14,207												67,268
4.00" JPC PAVEMENT DRAINAGE BLANKET	53,061	14,207												67,268
4.00" CSB	53,061	14,207												67,268
SHOULDERS (MAINLINE - CONCRETE OPTION)														
6.00" JPC PAVEMENT	24	7,753												7,777
FULL DEPTH CSB (FROM CROSS-SECTS. CU. YD.) (B)	18	4,895												4,913
ASPHALT SEAL COAT	16	4,084												4,100
ASPHALT SEAL AGGREGATE	16	4,084												4,100
OR														
SHOULDERS (MAINLINE - ASPHALT OPTION)														
1.25" CL2 ASPH SURF 0.38D PG64-22	24	7,753												7,777
3.00" CL2 ASPH BASE 1.00D PG64-22	24	7,753												7,777
FULL DEPTH CSB (FROM CROSS-SECTS. CU. YD.) (B)	21	5,397												5,418
ASPHALT SEAL COAT	16	4,084												4,100
ASPHALT SEAL AGGREGATE	16	4,084												4,100
TRAFFIC LANES (APPROACH ROADS W/ CURB & GUTTER)														
1.25" CL3 ASPH SURF 0.38A PG64-22 (C)			309	1,114	227	309								2,269
3.00" CL3 ASPH BASE 1.00D PG64-22			309	619	228	311								1,777
3.75" CL3 ASPH BASE 1.00D PG64-22			309	621	233	316								1,789
8.00" CSB			476	827	258	343								2,277
TRAFFIC LANES (APPROACH ROADS & TEMPORARY PMT)														
1.25" CL2 ASPH SURF 0.38D PG64-22							142					4,466	1,346	8,960
4.00" CL2 ASPH BASE 1.00D PG64-22							143					4,502	1,358	16,636
8.00" CSB							149					4,619	1,395	17,095
ENTRANCES														
1.25" CL2 ASPH SURF 0.38D PG64-22 (9)	1,616									45		52	132	1,944
2.00" CL2 ASPH BASE 1.00D PG64-22 (9)	1,626									46		53	134	1,959
6.00" CSB (9)	1646									48		54	136	1,986

PAVING SUMMARY - CONCRETE ALTERNATE

ITEM CODE	ITEM	UNIT	KY 61 URBAN	KY 61 RURAL	CHERRY STREET	BLUE LICK ROAD	BISHOP LANE	NORTH SIDE AVENUE	HARBOR AVENUE	POINTE BLVD.	CORAL RIDGE ROAD	ACCESS ROAD NO. 1	FRONTAGE ROAD NO. 1	CONESTOGA PKWY.	TEMP. PMT. (MOT)	TOTAL PROJECT
0003	CSB (1)(8)	TON	13,017	3,725	215	374	133	154	67	169	2,103	677	768	341	4,203	25,946
0013	LIME STABILIZED ROADBED (TOP 8 IN)	SQ YD	59,474	23,717										1,524		84,715
0014	LIME (7)	TON	1,125	449										29		1,603
0018	DRAINAGE BLANKET-TYPE II-ASPH (4)	TON	10,466	2,802										294		13,562
0100	ASPHALT SEAL AGGREGATE (2)	TON	1	82												83
0103	ASPHALT SEAL COAT (3)	TON	-	10												10
0212	CLASS 2 ASPHALT BASE 1.00D PG64-22	TON	181	1,260			5		31		980	308	353		1,961	5,079
0214	CLASS 3 ASPHALT BASE 1.00D PG64-22	TON			115	227	86	116		115				841		1,500
0301	CLASS 2 ASPHALT SURF 0.38D PG64-22	TON	106	504			3		9		293	96	108		582	1,701
22906ESA03	CLASS 3 ASPHALT SURF 0.38A PG64-22	TON	409		20	73	14	20		20				94		650
0358	ASPHALT CURING SEAL (5)	TON	60	24										1		85
2702	SAND FOR BLOTTER (6)	TON	149	60										3		212
02073	JPC PAVEMENT - 9 IN	SQ YD	53,061	14,207												67,268
02075	JPC PAVEMENT - 6 IN SHLD	SQ YD	24	7,753												7,777
02599	FABRIC-GEOTEXTILE TYPE IV (10)	SQ YD	59,474	23,717										1,524		84,715

NOTES

- ALL ASPHALT MIXTURES SHALL BE ESTIMATED AT 110 LBS. PER SQ. YD. PER INCH OF DEPTH, UNLESS NOTED OTHERWISE.
- (1) ESTIMATED AT 115 LBS. PER SQ. YD. PER INCH OF DEPTH.
  - (2) ESTIMATED AT 20 LBS. PER SQ. YD. (TWO APPLICATIONS)
  - (3) ESTIMATED AT 2.4 LBS. PER SQ. YD. (TWO APPLICATIONS)
  - (4) ESTIMATED AT 100 LBS. PER SQ. YD. PER INCH OF DEPTH.
  - (5) ESTIMATED AT 2.0 LBS. PER SQ. YD.
  - (6) ESTIMATED AT 5.0 LBS. PER SQ. YD.
  - (7) ESTIMATED AT 6% BY MASS AT 106 LBS. PER CU. FT.
  - (8) INCLUDES 496 TONS OF CRUSHED STONE BASE FOR REPAIR OF PUBLIC ROADWAY USED FOR CONSTRUCTION ACCESS AND 477 TONS FOR THE 4 INCHES OF CRUSHED STONE BASE UNDER THE CONCRETE ENTRANCE PAVEMENT AND SIDEWALK.
  - (9) KY 61 URBAN INCLUDES ASPHALT ENTRANCE PAVEMENT BEHIND CONCRETE ENTRANCES.
  - (10) CARRIED OVER TO GENERAL SUMMARY.

KY 61 (PRESTON HIGHWAY) PAVING AREAS & SUMMARY CONCRETE ALTERNATE

ENGLISH

PAVING AREAS - CONCRETE ALTERNATE

ITEM	KY 61 URBAN	KY 61 RURAL	CHERRY STREET	BLUE LICK ROAD	BISHOP LANE	NORTH SIDE AVENUE	HARBOR AVENUE	CORAL RIDGE ROAD	ACCESS ROAD NO. 1	FRONTAGE ROAD NO. 1	CONESTOGA PKWY.	TEMP. PMT. (MOT)	TOTAL PROJECT
SUBGRADE PREPARATION													
8.00" LIME STABILIZED ROADBED											1,524		84,715
TRAFFIC LANES (CONESTOGA PKWY.)													
1.25" CL3 ASPH SURF 0.38A PG64-22											1,447		1,447
3.00" CL3 ASPH BASE 1.00D PG64-22											1,451		1,451
3.75" CL3 ASPH BASE 1.00D PG64-22											1,463		1,463
3.75" CL3 ASPH BASE 1.00D PG64-22											1,478		1,478
4.00" DRAINAGE BLANKET TYPE II ASPHALT											1,492		1,492
4.00" CSB											1,508		1,508
TRAFFIC LANES (MAINLINE URBAN & RURAL 1)													
1.25" CL3 ASPH SURF 0.38A PG64-22 (A)	6,310												6,310
9.00" JPC PAVEMENT	53,061	14,207											67,268
4.00" JPC PAVEMENT DRAINAGE BLANKET	53,061	14,207											67,268
4.00" CSB	53,061	14,207											67,268
SHOULDERS (MAINLINE - CONCRETE OPTION)													
6.00" JPC PAVEMENT	24	7,753											7,777
FULL DEPTH CSB (FROM CROSS-SECTS. CU. YD.) (B)	18	4,895											4,913
ASPHALT SEAL COAT	16	4,084											4,100
ASPHALT SEAL AGGREGATE	16	4,084											4,100
OR													
SHOULDERS (MAINLINE - ASPHALT OPTION)													
1.25" CL2 ASPH SURF 0.38D PG64-22	24	7,753											7,777
3.00" CL2 ASPH BASE 1.00D PG64-22	24	7,753											7,777
FULL DEPTH CSB (FROM CROSS-SECTS. CU. YD.) (B)	21	5,397											5,418
ASPHALT SEAL COAT	16	4,084											4,100
ASPHALT SEAL AGGREGATE	16	4,084											4,100
TRAFFIC LANES (APPROACH ROADS W/ CURB & GUTTER)													
1.25" CL3 ASPH SURF 0.38A PG64-22 (C)			309	1,114	227	309							2,269
3.00" CL3 ASPH BASE 1.00D PG64-22			309	619	228	311							1,777
3.75" CL3 ASPH BASE 1.00D PG64-22			309	621	233	316							1,789
8.00" CSB			476	827	258	343							2,277
TRAFFIC LANES (APPROACH ROADS & TEMPORARY PMT)													
1.25" CL2 ASPH SURF 0.38D PG64-22							142				4,466	1,346	16,477
4.00" CL2 ASPH BASE 1.00D PG64-22							143				4,502	1,358	16,636
8.00" CSB							149				4,619	1,395	17,095
ENTRANCES													
1.25" CL2 ASPH SURF 0.38D PG64-22 (9)											52	132	1,944
2.00" CL2 ASPH BASE 1.00D PG64-22 (9)											53	134	1,959
6.00" CSB (9)											54	136	1,986

PAVING SUMMARY - CONCRETE ALTERNATE

ITEM CODE	ITEM	UNIT	KY 61 URBAN	KY 61 RURAL	CHERRY STREET	BLUE LICK ROAD	BISHOP LANE	NORTH SIDE AVENUE	HARBOR AVENUE	CORAL RIDGE ROAD	ACCESS ROAD NO. 1	FRONTAGE ROAD NO. 1	CONESTOGA PKWY.	TEMP. PMT. (MOT)	TOTAL PROJECT
0003	CSB (1)(8)	TON	13,017	3,725	215	374	133	154	67	169	677	768	341	4,203	25,946
0013	LIME STABILIZED ROADBED (TOP 8 IN)	SQ YD	59,474	23,717									1,524		84,715
0014	LIME (7)	TON	1,125	449									29		1,603
0018	DRAINAGE BLANKET-TYPE II-ASPH (4)	TON	10,466	2,802									294		13,562
0100	ASPHALT SEAL AGGREGATE (2)	TON	1	82											83
0103	ASPHALT SEAL COAT (3)	TON	-	10											10
0212	CLASS 2 ASPHALT BASE 1.00D PG64-22	TON	181	1,260			5		31		308	353		1,961	5,079
0214	CLASS 3 ASPHALT BASE 1.00D PG64-22	TON			115	227	86	116	115		96	108	841	582	1,500
0301	CLASS 2 ASPHALT SURF 0.38D PG64-22	TON	106	504			3		9						1,701
22906ES403	CLASS 3 ASPHALT SURF 0.38A PG64-22	TON	409		20	73	14	20	20						650
0358	ASPHALT CURING SEAL (5)	TON	60	24											85
2702	SAND FOR BLOTTER (6)	TON	149	60											212
02073	JPC PAVEMENT - 9 IN	SQ YD	53,061	14,207											67,268
02075	JPC PAVEMENT - 6 IN SHLD	SQ YD	24	7,753											7,777
02599	FABRIC-GEOTEXTILE TYPE IV (10)	SQ YD	59,474	23,717									1,524		84,715

NOTES

ALL ASPHALT MIXTURES SHALL BE ESTIMATED AT 110 LBS. PER SQ. YD. PER INCH OF DEPTH, UNLESS NOTED OTHERWISE.

- (1) ESTIMATED AT 115 LBS. PER SQ. YD. PER INCH OF DEPTH.
- (2) ESTIMATED AT 20 LBS. PER SQ. YD. (TWO APPLICATIONS)
- (3) ESTIMATED AT 2.4 LBS. PER SQ. YD. (TWO APPLICATIONS)
- (4) ESTIMATED AT 100 LBS. PER SQ. YD. PER INCH OF DEPTH.
- (5) ESTIMATED AT 2.0 LBS. PER SQ. YD.
- (6) ESTIMATED AT 5.0 LBS. PER SQ. YD.
- (7) ESTIMATED AT 6% BY MASS AT 106 LBS. PER CU. FT.
- (8) INCLUDES 496 TONS OF CRUSHED STONE BASE FOR REPAIR OF PUBLIC ROADWAY USED FOR CONSTRUCTION ACCESS AND 477 TONS FOR THE 4 INCHES OF CRUSHED STONE BASE UNDER THE CONCRETE ENTRANCE PAVEMENT AND SIDEWALK.
- (9) KY 61 URBAN INCLUDES ASPHALT ENTRANCE PAVEMENT BEHIND CONCRETE ENTRANCES.
- (10) CARRIED OVER TO GENERAL SUMMARY.

KY 61 (PRESTON HIGHWAY) PAVING AREAS & SUMMARY CONCRETE ALTERNATE

ENGLISH

**PROPOSAL BID ITEMS**

REVISED ADDENDUM #4: 11-19-15

151265

Page 1 of 10

Report Date 11/19/15

**Section: 0001 - PAVING - ALTERNATE 1 - ASPHALT**

LINE	BID CODE	ALT	DESCRIPTION	QUANTITY	UNIT	UNIT PRIC	FP	AMOUNT
0010	00003		CRUSHED STONE BASE	93,428.00	TON		\$	
0020	00013		LIME STABILIZED ROADBED	102,918.00	SQYD		\$	
0030	00014		LIME	1,947.00	TON		\$	
0040	00018		DRAINAGE BLANKET-TYPE II-ASPH	18,204.00	TON		\$	
0050	00100		ASPHALT SEAL AGGREGATE	328.00	TON		\$	
0060	00103		ASPHALT SEAL COAT	40.00	TON		\$	
0070	00212		CL2 ASPH BASE 1.00D PG64-22	13,150.00	TON		\$	
0080	00214		CL3 ASPH BASE 1.00D PG64-22	66,269.00	TON		\$	
0090	00301		CL2 ASPH SURF 0.38D PG64-22	4,616.00	TON		\$	
0100	22906ES403		CL3 ASPH SURF 0.38A PG64-22 (REVISED: 11-18-15)	6,002.00	TON		\$	
0110	00358		ASPHALT CURING SEAL	104.00	TON		\$	
0120	00388		CL3 ASPH SURF 0.38B PG64-22	2,002.00	TON		\$	
0130	02702		SAND FOR BLOTTER	257.00	TON		\$	
0140	10203ND		PAVEMENT ADJUSTMENT (ASPHALT, 5-117.10)	1.00	LS	455,953.00	\$	\$455,953.00
0150	10203ND		PAVEMENT ADJUSTMENT (ASPHALT, 5-117.20)	1.00	LS	311,645.00	\$	\$311,645.00

**Section: 0002 - PAVING - ALTERNATE 2 - CONCRETE**

LINE	BID CODE	ALT	DESCRIPTION	QUANTITY	UNIT	UNIT PRIC	FP	AMOUNT
0160	00003		CRUSHED STONE BASE	79,386.00	TON		\$	
0170	00013		LIME STABILIZED ROADBED	102,918.00	SQYD		\$	
0180	00014		LIME	1,947.00	TON		\$	
0190	00018		DRAINAGE BLANKET-TYPE II-ASPH	16,542.00	TON		\$	
0200	00100		ASPHALT SEAL AGGREGATE	328.00	TON		\$	
0210	00103		ASPHALT SEAL COAT	40.00	TON		\$	
0220	00212		CL2 ASPH BASE 1.00D PG64-22	13,150.00	TON		\$	
0230	00214		CL3 ASPH BASE 1.00D PG64-22	1,500.00	TON		\$	
0240	00301		CL2 ASPH SURF 0.38D PG64-22	4,506.00	TON		\$	
0250	22906ES403		CL3 ASPH SURF 0.38A PG64-22 (REVISED: 11-18-15)	650.00	TON		\$	
0260	00358		ASPHALT CURING SEAL	104.00	TON		\$	
0270	02073		JPC PAVEMENT-9 IN	113,177.00	SQYD		\$	
0280	02075		JPC PAVEMENT-6 IN	29,801.00	SQYD		\$	
0290	02702		SAND FOR BLOTTER	257.00	TON		\$	
0300	10203ND		PAVEMENT ADJUSTMENT (CONCRETE, 5-117.20)	1.00	LS	196,277.00	\$	\$196,277.00
0310	10203ND		PAVEMENT ADJUSTMENT (CONCRETE, 5-117.10)	1.00	LS	287,165.00	\$	\$287,165.00

**Section: 0003 - ROADWAY**

LINE	BID CODE	ALT	DESCRIPTION	QUANTITY	UNIT	UNIT PRIC	FP	AMOUNT
0320	00078		CRUSHED AGGREGATE SIZE NO 2	28.60	TON		\$	
0330	01000		PERFORATED PIPE-4 IN	26,326.50	LF		\$	

**PROPOSAL BID ITEMS**

REVISED ADDENDUM #4: 11-19-15

151265

Page 2 of 10

Report Date 11/19/15

LINE	BID CODE	ALT	DESCRIPTION	QUANTITY	UNIT	UNIT PRIC	FP	AMOUNT
0340	01010		NON-PERFORATED PIPE-4 IN	425.50	LF		\$	
0350	01015		INSPECT & CERTIFY EDGE DRAIN SYSTEM (5-117.20)	1.00	LS		\$	
0360	01015		INSPECT & CERTIFY EDGE DRAIN SYSTEM (5-117.10)	1.00	LS		\$	
0370	01020		PERF PIPE HEADWALL TY 1-4 IN	5.00	EACH		\$	
0380	01024		PERF PIPE HEADWALL TY 2-4 IN	1.00	EACH		\$	
0390	01028		PERF PIPE HEADWALL TY 3-4 IN	1.00	EACH		\$	
0400	01032		PERF PIPE HEADWALL TY 4-4 IN	13.00	EACH		\$	
0410	01310		REMOVE PIPE	2,664.00	LF		\$	
0420	01584		CAP DROP BOX INLET	1.00	EACH		\$	
0430	01706		REMOVE CATCH BASIN	27.00	EACH		\$	
0440	01740		CORED HOLE DRAINAGE BOX CON-4 IN	148.00	EACH		\$	
0450	01786		FILL AND CAP MANHOLE	6.00	EACH		\$	
0460	01787		REMOVE MANHOLE	5.00	EACH		\$	
0470	01792		ADJUST MANHOLE	13.00	EACH		\$	
0480	01810		STANDARD CURB AND GUTTER	7,871.00	LF		\$	
0490	01811		STANDARD CURB AND GUTTER MOD	5,409.00	LF		\$	
0500	01845		ISLAND INTEGRAL CURB	270.50	LF		\$	
0510	01875		STANDARD HEADER CURB	1,105.00	LF		\$	
0520	01897		ASPHALT WEDGE CURB	55.00	LF		\$	
0530	01982		DELINEATOR FOR GUARDRAIL MONO DIRECTIONAL WHITE	139.00	EACH		\$	
0540	01983		DELINEATOR FOR GUARDRAIL MONO DIRECTIONAL YELLOW	36.00	EACH		\$	
0550	01984		DELINEATOR FOR BARRIER - WHITE	48.00	EACH		\$	
0560	01987		DELINEATOR FOR GUARDRAIL BI DIRECTIONAL WHITE	26.00	EACH		\$	
0570	01990		DELINEATOR FOR BARRIER WALL-B/W	5.00	EACH		\$	
0580	02003		RELOCATE TEMP CONC BARRIER	11,985.00	LF		\$	
0590	02014		BARRICADE-TYPE III	48.00	EACH		\$	
0600	02091		REMOVE PAVEMENT	1,715.10	SQYD		\$	
0610	02101		CEM CONC ENT PAVEMENT-8 IN	2,270.00	SQYD		\$	
0620	02159		TEMP DITCH	11,836.00	LF		\$	
0630	02160		CLEAN TEMP DITCH	5,918.00	LF		\$	
0640	02200		ROADWAY EXCAVATION	350,939.00	CUYD		\$	
0650	02223		GRANULAR EMBANKMENT	12,130.00	CUYD		\$	
0660	02242		WATER (FOR DUST CONTROL)	10.10	MGAL		\$	
0662	02259		FENCE-TEMP (ADDED: 11-2-15)	400.00	LF		\$	
0670	02262		FENCE-WOVEN WIRE TYPE 1	15,470.00	LF		\$	
0680	02351		GUARDRAIL-STEEL W BEAM-S FACE	10,156.50	LF		\$	
0690	02352		GUARDRAIL-STEEL W BEAM-D FACE	825.00	LF		\$	
0700	02360		GUARDRAIL TERMINAL SECTION NO 1	11.00	EACH		\$	
0710	02363		GUARDRAIL CONNECTOR TO BRIDGE END TY A	12.00	EACH		\$	
0720	02365		CRASH CUSHION TYPE IX-A	6.00	EACH		\$	
0730	02367		GUARDRAIL END TREATMENT TYPE 1	12.00	EACH		\$	
0740	02369		GUARDRAIL END TREATMENT TYPE 2A	22.00	EACH		\$	
0750	02381		REMOVE GUARDRAIL	3,735.40	LF		\$	
0760	02383		REMOVE & RESET GUARDRAIL	523.00	LF		\$	

**PROPOSAL BID ITEMS**

151265

Report Date 11/19/15

LINE	BID CODE	ALT	DESCRIPTION	QUANTITY	UNIT	UNIT PRIC	FP	AMOUNT
0770	02387		GUARDRAIL CONNECTOR TO BRIDGE END TY A-1	11.00	EACH		\$	
0780	02391		GUARDRAIL END TREATMENT TYPE 4A	1.00	EACH		\$	
0790	02397		TEMP GUARDRAIL	226.50	LF		\$	
0800	02429		RIGHT-OF-WAY MONUMENT TYPE 1	119.00	EACH		\$	
0810	02430		RIGHT-OF-WAY MONUMENT TYPE 1A	11.00	EACH		\$	
0820	02432		WITNESS POST	33.00	EACH		\$	
0830	02483		CHANNEL LINING CLASS II	5,411.00	TON		\$	
0840	02484		CHANNEL LINING CLASS III	5,380.00	TON		\$	
0850	02545		CLEARING AND GRUBBING (5-117.20 - APPROXIMATELY 56.745 ACRES)	1.00	LS		\$	
0860	02545		CLEARING AND GRUBBING (5-117.10: APPROXIMATELY 41.521 ACRES)	1.00	LS		\$	
0870	02555		CONCRETE-CLASS B	327.00	CUYD		\$	
0880	02562		TEMPORARY SIGNS	2,691.00	SQFT		\$	
0890	02585		EDGE KEY	264.20	LF		\$	
0900	02596		FABRIC-GEOTEXTILE TYPE I	13,854.00	SQYD		\$	
0910	02599		FABRIC-GEOTEXTILE TYPE IV	270,907.00	SQYD		\$	
0920	02625		REMOVE HEADWALL	17.00	EACH		\$	
0930	02650		MAINTAIN & CONTROL TRAFFIC (5-117.20)	1.00	LS		\$	
0940	02650		MAINTAIN & CONTROL TRAFFIC (5-117.10)	1.00	LS		\$	
0950	02651		DIVERSIONS (BY-PASS DETOURS) (5-117.20 - KY 61 CONNECTOR)	1.00	LS		\$	
0960	02651		DIVERSIONS (BY-PASS DETOURS) (5-117.20 - BECNEL LANE, STA. 0+152.999 @ MAINLINE 5+834.523)	1.00	LS		\$	
0970	02651		DIVERSIONS (BY-PASS DETOURS) (5-117.20 - HILLBROOK DRIVE, STA. 5+000.000 @ MAINLINE 6+170.000)	1.00	LS		\$	
0980	02651		DIVERSIONS (BY-PASS DETOURS) (5-117.10 - A: STA. 3+305.000, MAINLINE KY 61)	1.00	LS		\$	
0990	02651		DIVERSIONS (BY-PASS DETOURS) (5-117.10 - B: STA. 0+000.000, MAINLINE KY 61)	1.00	LS		\$	
1000	02651		DIVERSIONS (BY-PASS DETOURS) (5-117.10 - CRR DIVERSION, STA. 4+947.527, CORAL RIDGE ROAD)	1.00	LS		\$	
1010	02651		DIVERSIONS (BY-PASS DETOURS) (5-117.10 - NS DIVERSION STA. 0+000.000, NORTH SIDE AVENUE)	1.00	LS		\$	
1020	02651		DIVERSIONS (BY-PASS DETOURS) (5-117.10 - POINTE DIVERSION STA. 0+000.000, POINTE BOULEVARD)	1.00	LS		\$	
1030	02671		PORTABLE CHANGEABLE MESSAGE SIGN	6.00	EACH		\$	
1040	02676		MOBILIZATION FOR MILL & TEXT (5-117.10)	1.00	LS		\$	
1050	02677		ASPHALT PAVE MILLING & TEXTURING	442.00	TON		\$	
1060	02690		SAFELADING	227.00	CUYD		\$	
1070	02696		SHOULDER RUMBLE STRIPS-SAWED	34,933.00	LF		\$	
1080	02701		TEMP SILT FENCE	11,936.00	LF		\$	
1090	02703		SILT TRAP TYPE A	81.00	EACH		\$	
1100	02704		SILT TRAP TYPE B	81.00	EACH		\$	

**PROPOSAL BID ITEMS**

REVISED ADDENDUM #4: 11-19-15

151265

Page 4 of 10

Report Date 11/19/15

LINE	BID CODE	ALT	DESCRIPTION	QUANTITY	UNIT	UNIT PRIC	FP	AMOUNT
1110	02705		SILT TRAP TYPE C	81.00	EACH		\$	
1120	02706		CLEAN SILT TRAP TYPE A	162.00	EACH		\$	
1130	02707		CLEAN SILT TRAP TYPE B	162.00	EACH		\$	
1140	02708		CLEAN SILT TRAP TYPE C	162.00	EACH		\$	
1150	02720		SIDEWALK-4 IN CONCRETE	6,786.00	SQYD		\$	
1160	02726		STAKING (5-117.20)	1.00	LS		\$	
1170	02726		STAKING (5-117.10)	1.00	LS		\$	
1180	02731		REMOVE STRUCTURE (5-117.10 - CSX BRIDGE)	1.00	LS		\$	
1190	02731		REMOVE STRUCTURE (5-117.10 - CULVERT)	1.00	LS		\$	
1200	02775		ARROW PANEL	4.00	EACH		\$	
1210	02898		RELOCATE CRASH CUSHION	58.00	EACH		\$	
1220	03171		CONCRETE BARRIER WALL TYPE 9T	2,897.00	LF		\$	
1230	03225		TUBULAR MARKERS	198.00	EACH		\$	
1240	05950		EROSION CONTROL BLANKET	4,298.00	SQYD		\$	
1250	05952		TEMP MULCH	321,873.00	SQYD		\$	
1260	05953		TEMP SEEDING AND PROTECTION	241,384.00	SQYD		\$	
1270	05963		INITIAL FERTILIZER	92.00	TON		\$	
1280	05964		20-10-10 FERTILIZER	24.00	TON		\$	
1290	05985		SEEDING AND PROTECTION	413,596.00	SQYD		\$	
1300	05989		SPECIAL SEEDING CROWN VETCH	27,622.00	SQYD		\$	
1310	05992		AGRICULTURAL LIMESTONE	280.00	TON		\$	
1320	06510		PAVE STRIPING-TEMP PAINT-4 IN	127,152.00	LF		\$	
1330	06514		PAVE STRIPING-PERM PAINT-4 IN	156,942.00	LF		\$	
1340	06550		PAVE STRIPING-TEMP REM TAPE-W	32,457.00	LF		\$	
1350	06551		PAVE STRIPING-TEMP REM TAPE-Y	32,457.00	LF		\$	
1360	06565		PAVE MARKING-THERMO X-WALK-6 IN	843.00	LF		\$	
1370	06568		PAVE MARKING-THERMO STOP BAR-24IN	230.00	LF		\$	
1380	06569		PAVE MARKING-THERMO CROSS-HATCH	5,371.00	SQFT		\$	
1390	06574		PAVE MARKING-THERMO CURV ARROW	44.00	EACH		\$	
1400	06576		PAVE MARKING-THERMO ONLY	1.00	EACH		\$	
1410	06578		PAVE MARKING-THERMO MERGE ARROW	4.00	EACH		\$	
1420	06588		PAVEMENT MARKER TY IVA-BY TEMP	1,093.00	EACH		\$	
1430	08001		STRUCTURE EXCAVATION-COMMON	588.00	CUYD		\$	
1440	08002		STRUCTURE EXCAV-SOLID ROCK	53.00	CUYD		\$	
1450	08100		CONCRETE-CLASS A	8.30	CUYD		\$	
1460	08903		CRASH CUSHION TY VI CLASS BT TL3	11.00	EACH		\$	
1470	20000ES724		TREE	28.00	EACH		\$	
1480	20259ED		TEMPORARY MEDIAN CROSSOVER	4.00	EACH		\$	
1490	20424EC		CONNECT TO EXIST MANHOLE	1.00	EACH		\$	
1500	20914ED		ROLLED CURB AND GUTTER	146.00	LF		\$	
1510	21342ED		FORM LINER (COBBLESTONE)	2,671.00	SQFT		\$	
1520	23139EN		STRIPING REMOVAL	55,072.00	LF		\$	
1530	23158ES505		DETECTABLE WARNINGS	1,299.00	SQFT		\$	
1540	23274EN11F		TURF REINFORCEMENT MAT 1	28,797.00	SQYD		\$	
1550	24096EC		REMOVE AND RESET END TREATMENT	2.00	EACH		\$	
1560	24814EC		PIPELINE INSPECTION	11,762.00	LF		\$	

**PROPOSAL BID ITEMS**

151265

Report Date 11/19/15

**Section: 0004 - DRAINAGE**

LINE	BID CODE	ALT	DESCRIPTION	QUANTITY	UNIT	UNIT PRIC	FP	AMOUNT
1570	00440		ENTRANCE PIPE-15 IN	431.00	LF		\$	
1580	00441		ENTRANCE PIPE-18 IN	136.00	LF		\$	
1590	00443		ENTRANCE PIPE-24 IN	118.00	LF		\$	
1600	00461		CULVERT PIPE-15 IN	52.00	LF		\$	
1610	00462		CULVERT PIPE-18 IN	976.00	LF		\$	
1620	00464		CULVERT PIPE-24 IN	171.00	LF		\$	
1630	00466		CULVERT PIPE-30 IN	404.00	LF		\$	
1640	00468		CULVERT PIPE-36 IN	133.00	LF		\$	
1650	00469		CULVERT PIPE-42 IN	230.00	LF		\$	
1660	00470		CULVERT PIPE-48 IN	149.00	LF		\$	
1670	00498		CULVERT PIPE-42 IN EQUIV	41.00	LF		\$	
1680	00500		CULVERT PIPE-54 IN EQUIV	46.00	LF		\$	
1690	00521		STORM SEWER PIPE-15 IN	6,440.00	LF		\$	
1700	00522		STORM SEWER PIPE-18 IN	2,768.00	LF		\$	
1710	00524		STORM SEWER PIPE-24 IN	3,537.00	LF		\$	
1720	00525		STORM SEWER PIPE-27 IN	115.00	LF		\$	
1730	00526		STORM SEWER PIPE-30 IN	1,064.00	LF		\$	
1740	00528		STORM SEWER PIPE-36 IN	265.00	LF		\$	
1750	00530		STORM SEWER PIPE-48 IN	128.00	LF		\$	
1760	00556		STORM SEWER PIPE-30 IN EQUIV	3,644.00	LF		\$	
1770	00560		STORM SEWER PIPE-48 IN EQUIV	118.00	LF		\$	
1780	01204		PIPE CULVERT HEADWALL-18 IN	6.00	EACH		\$	
1790	01204		PIPE CULVERT HEADWALL-18 IN	3.00	EACH		\$	
1800	01210		PIPE CULVERT HEADWALL-30 IN	1.00	EACH		\$	
1810	01210		PIPE CULVERT HEADWALL-30 IN	1.00	EACH		\$	
1820	01212		PIPE CULVERT HEADWALL-36 IN	1.00	EACH		\$	
1830	01214		PIPE CULVERT HEADWALL-42 IN	3.00	EACH		\$	
1840	01215		PIPE CULVERT HEADWALL-42 IN EQUIV	1.00	EACH		\$	
1850	01216		PIPE CULVERT HEADWALL-48 IN	4.00	EACH		\$	
1860	01374		METAL END SECTION TY 1-30 IN	1.00	EACH		\$	
1870	01390		METAL END SECTION TY 3-15 IN	28.00	EACH		\$	
1880	01391		METAL END SECTION TY 3-18 IN	22.00	EACH		\$	
1890	01393		METAL END SECTION TY 3-24 IN	9.00	EACH		\$	
1900	01394		METAL END SECTION TY 3-30 IN	6.00	EACH		\$	
1910	01395		METAL END SECTION TY 3-36 IN	5.00	EACH		\$	
1920	01396		METAL END SECTION TY 3-42 IN	1.00	EACH		\$	
1930	01397		METAL END SECTION TY 3-48 IN	1.00	EACH		\$	
1940	01456		CURB BOX INLET TYPE A	127.00	EACH		\$	
1950	01480		CURB BOX INLET TYPE B	13.00	EACH		\$	
1960	01487		CURB BOX INLET TYPE F	3.00	EACH		\$	
1970	01490		DROP BOX INLET TYPE 1	7.00	EACH		\$	
1980	01496		DROP BOX INLET TYPE 3	10.00	EACH		\$	
1990	01499		DROP BOX INLET TYPE 4	3.00	EACH		\$	
2000	01514		DROP BOX INLET TYPE 5E	1.00	EACH		\$	
2010	01517		DROP BOX INLET TYPE 5F	13.00	EACH		\$	
2020	01538		DROP BOX INLET TYPE 7	3.00	EACH		\$	
2030	01544		DROP BOX INLET TYPE 11	1.00	EACH		\$	



**PROPOSAL BID ITEMS**

REVISED ADDENDUM #4: 11-19-15

151265

Page 6 of 10

Report Date 11/19/15

LINE	BID CODE	ALT	DESCRIPTION	QUANTITY	UNIT	UNIT PRIC	FP	AMOUNT
2040	01559		DROP BOX INLET TYPE 13G	11.00	EACH		\$	
2050	01568		DROP BOX INLET TYPE 13S	2.00	EACH		\$	
2060	01577		DROP BOX INLET TYPE 14	2.00	EACH		\$	
2070	01585		REMOVE DROP BOX INLET	1.00	EACH		\$	
2080	01641		JUNCTION BOX-15 IN	1.00	EACH		\$	
2090	01642		JUNCTION BOX-18 IN	1.00	EACH		\$	
2100	01643		JUNCTION BOX-24 IN	2.00	EACH		\$	
2110	01645		JUNCTION BOX-36 IN	2.00	EACH		\$	
2120	01767		MANHOLE TYPE C	3.00	EACH		\$	
2130	01789		RECONSTRUCT MANHOLE	1.00	EACH		\$	
2140	02600		FABRIC GEOTEXTILE TY IV FOR PIPE	33,460.00	SQYD	\$2.00	\$	\$66,920.00
2150	21880NN		METAL END SECTION TY 3-42 IN EQUIV	1.00	EACH		\$	
2160	23048NN		METAL END SECTION TY 3-54 IN EQ	2.00	EACH		\$	

**Section: 0005 - BRIDGE - CSX RR, DWG. 24693**

LINE	BID CODE	ALT	DESCRIPTION	QUANTITY	UNIT	UNIT PRIC	FP	AMOUNT
2170	02231		STRUCTURE GRANULAR BACKFILL	944.00	CUYD		\$	
2180	02998		MASONRY COATING	4,613.00	SQYD		\$	
2190	03299		ARMORED EDGE FOR CONCRETE	453.00	LF		\$	
2200	08002		STRUCTURE EXCAV-SOLID ROCK	3,083.00	CUYD		\$	
2210	08003		FOUNDATION PREPARATION (5-117.10 - CSX BRIDGE)	1.00	LS		\$	
2220	08033		TEST PILES	43.00	LF		\$	
2230	08039		PRE-DRILLING FOR PILES	164.00	LF		\$	
2240	08046		PILES-STEEL HP12X53	1,040.00	LF		\$	
2250	08094		PILE POINTS-12 IN	67.00	EACH		\$	
2260	08100		CONCRETE-CLASS A	1,696.00	CUYD		\$	
2270	08104		CONCRETE-CLASS AA (REVISED: 11-19-15)	1,586.60	CUYD		\$	
2280	08150		STEEL REINFORCEMENT	280,575.00	LB		\$	
2290	08151		STEEL REINFORCEMENT-EPOXY COATED	344,535.00	LB		\$	
2300	08635		PRECAST PC I BEAM TYPE 6	4,282.10	LF		\$	
2310	21532ED		RAIL SYSTEM TYPE III	1,472.00	LF		\$	
2320	23964EC		PROTECTIVE FENCE	1,472.00	LF		\$	

**Section: 0006 - BRIDGE - I-65 - DWG. 24691**

LINE	BID CODE	ALT	DESCRIPTION	QUANTITY	UNIT	UNIT PRIC	FP	AMOUNT
2330	02231		STRUCTURE GRANULAR BACKFILL (REVISED: 11-19-15)	1,167.00	CUYD		\$	
2340	02731		REMOVE STRUCTURE (5-117.20 - REMOVE EXISTING RETAINING WALL)	1.00	LS		\$	
2350	02998		MASONRY COATING	1,243.00	SQYD		\$	
2360	03299		ARMORED EDGE FOR CONCRETE	102.70	LF		\$	
2370	08002		STRUCTURE EXCAV-SOLID ROCK	75.00	CUYD		\$	
2380	08003		FOUNDATION PREPARATION (5-117.20 - I-65 BRIDGE)	1.00	LS		\$	

**PROPOSAL BID ITEMS**

REVISED ADDENDUM #4: 11-19-15

151265

Page 7 of 10

Report Date 11/19/15

LINE	BID CODE	ALT	DESCRIPTION	QUANTITY	UNIT	UNIT PRIC	FP	AMOUNT
2390	08018		RETAINING WALL	4,112.00	SQFT		\$	
2400	08033		TEST PILES	59.00	LF		\$	
2410	08046		PILES-STEEL HP12X53 (REVISED: 11-19-15)	582.00	LF		\$	
2420	08039		PRE-DRILLING FOR PILES (REVISED: 11-19-15)	208.00	LF		\$	
2430	08100		CONCRETE-CLASS A	132.70	CUYD		\$	
2440	08104		CONCRETE-CLASS AA	441.20	CUYD		\$	
2450	08150		STEEL REINFORCEMENT	25,686.00	LB		\$	
2460	08151		STEEL REINFORCEMENT-EPOXY COATED	100,257.00	LB		\$	
2470	08269		ELECTRICAL CONDUIT (3 INCH) (REVISED: 11-2-15)	1.00	LS		\$	
2471	08269		ELECTRICAL CONDUIT (4 INCH) (ADDED: 11-2-15)	1.00	LS		\$	
2472	08269		ELECTRICAL CONDUIT (TEMPORARY) (ADDED: 11-2-15)	1.00	LS		\$	
2480	08635		PRECAST PC I BEAM TYPE 6	1,262.50	LF		\$	
2490	21532ED		RAIL SYSTEM TYPE III	511.50	LF		\$	

**Section: 0007 - BRIDGE - CULVERT - SINGLE RCBC 8' X 3 ' DWG. 24614**

LINE	BID CODE	ALT	DESCRIPTION	QUANTITY	UNIT	UNIT PRIC	FP	AMOUNT
2500	08003		FOUNDATION PREPARATION (5-117.10 - CULVERT, 24614)	1.00	LS		\$	
2510	08100		CONCRETE-CLASS A	83.80	CUYD		\$	
2520	08150		STEEL REINFORCEMENT	12,082.00	LB		\$	

**Section: 0008 - BRIDGE - BLUE LICK CREEK - DWG. 24695**

LINE	BID CODE	ALT	DESCRIPTION	QUANTITY	UNIT	UNIT PRIC	FP	AMOUNT
2530	02231		STRUCTURE GRANULAR BACKFILL	156.00	CUYD		\$	
2540	02596		FABRIC-GEOTEXTILE TYPE I	2,846.00	SQYD		\$	
2550	02998		MASONRY COATING	5,555.00	SQYD		\$	
2560	03299		ARMORED EDGE FOR CONCRETE	170.00	LF		\$	
2570	08002		STRUCTURE EXCAV-SOLID ROCK	128.00	CUYD		\$	
2580	08003		FOUNDATION PREPARATION (5-117.20 - BLUE LICK CREEK)	1.00	LS		\$	
2590	08019		CYCLOPEAN STONE RIP RAP	2,816.00	TON		\$	
2600	08033		TEST PILES	207.00	LF		\$	
2610	08046		PILES-STEEL HP12X53	2,965.00	LF		\$	
2620	08094		PILE POINTS-12 IN	114.00	EACH		\$	
2630	08100		CONCRETE-CLASS A	476.90	CUYD		\$	
2640	08104		CONCRETE-CLASS AA	589.90	CUYD		\$	
2650	08150		STEEL REINFORCEMENT	76,519.00	LB		\$	
2660	08151		STEEL REINFORCEMENT-EPOXY COATED	131,960.00	LB		\$	
2670	08633		PRECAST PC I BEAM TYPE 3	1,697.50	LF		\$	
2680	21532ED		RAIL SYSTEM TYPE III	691.30	LF		\$	

**PROPOSAL BID ITEMS**

REVISED ADDENDUM #4: 11-19-15

151265

Page 8 of 10

Report Date 11/19/15

**Section: 0009 - BRIDGE - CULVERT - DWG. 24615**

LINE	BID CODE	ALT	DESCRIPTION	QUANTITY	UNIT	UNIT PRIC	FP	AMOUNT
2690	08002		STRUCTURE EXCAV-SOLID ROCK	233.10	CUYD		\$	
2700	08003		FOUNDATION PREPARATION (5-117.20 - CULVERT 24615)	1.00	LS		\$	
2710	08100		CONCRETE-CLASS A	218.60	CUYD		\$	
2720	08150		STEEL REINFORCEMENT	19,809.00	LB		\$	

**Section: 0010 - UTILITY**

LINE	BID CODE	ALT	DESCRIPTION	QUANTITY	UNIT	UNIT PRIC	FP	AMOUNT
2730	01069		STEEL ENCASEMENT PIPE-12 IN (300MM, OPEN CUT-WINDSTREAM: BLUE LICK ROAD)	70.00	LF		\$	
2740	24845EC		UTILITY COORDINATION (ADDED: 11-16-15)	1.00	LS		\$	
2750	24844EC		UTILITY RELOCATION (ADDED: 11-16-15)	5,800,000.00	DOLL	\$1.00	\$	\$5,800,000.00

**Section: 0011 - SEWER**

LINE	BID CODE	ALT	DESCRIPTION	QUANTITY	UNIT	UNIT PRIC	FP	AMOUNT
2830	01055		SEWER PIPE-15 IN (PVC, GRAVITY, OPEN CUT)	334.00	LF		\$	
2840	21382ND		CUT AND PLUG-8 IN (PVC)	2.00	EACH		\$	
2850	22986NN		TIE NEW 15 IN PVC SEWER TO EXIST MANHOLE	2.00	EACH		\$	

**Section: 0012 - SIGNING**

LINE	BID CODE	ALT	DESCRIPTION	QUANTITY	UNIT	UNIT PRIC	FP	AMOUNT
2860	06406		SBM ALUM SHEET SIGNS .080 IN	790.00	SQFT		\$	
2870	06407		SBM ALUM SHEET SIGNS .125 IN	120.00	SQFT		\$	
2880	06410		STEEL POST TYPE 1	1,624.00	LF		\$	
2890	06412		STEEL POST MILE MARKERS	8.00	EACH		\$	
2900	20418ED		REMOVE & RELOCATE SIGNS	1.00	EACH		\$	
2910	24631EC		BARCODE SIGN INVENTORY	165.00	EACH		\$	

**Section: 0013 - SIGNALIZATION**

LINE	BID CODE	ALT	DESCRIPTION	QUANTITY	UNIT	UNIT PRIC	FP	AMOUNT
2920	04792		CONDUIT-1 IN	70.00	LF		\$	
2930	04793		CONDUIT-1 1/4 IN	230.00	LF		\$	
2940	04795		CONDUIT-2 IN	160.00	LF		\$	

**PROPOSAL BID ITEMS**

REVISED ADDENDUM #4: 11-19-15

151265

Page 9 of 10

Report Date 11/19/15

LINE	BID CODE	ALT	DESCRIPTION	QUANTITY	UNIT	UNIT PRIC	FP	AMOUNT
2950	04811		ELECTRICAL JUNCTION BOX TYPE B	5.00	EACH		\$	
2960	04820		TRENCHING AND BACKFILLING	460.00	LF		\$	
2970	04830		LOOP WIRE	3,743.00	LF		\$	
2980	04844		CABLE-NO. 14/5C	3,466.00	LF		\$	
2990	04850		CABLE-NO. 14/1 PAIR	2,288.00	LF		\$	
3000	04885		MESSENGER-10800 LB	900.00	LF		\$	
3010	04895		LOOP SAW SLOT AND FILL	1,436.00	LF		\$	
3020	04931		INSTALL CONTROLLER TYPE 170	2.00	EACH		\$	
3030	04932		INSTALL STEEL STRAIN POLE	8.00	EACH		\$	
3040	04950		REMOVE SIGNAL EQUIPMENT	1.00	EACH		\$	
3050	20093NS835		INSTALL PEDESTRIAN HEAD-LED	12.00	EACH		\$	
3060	20094ES835		TEMP RELOCATION OF SIGNAL HEAD	38.00	EACH		\$	
3070	20188NS835		INSTALL LED SIGNAL-3 SECTION	19.00	EACH		\$	
3080	21743NN		INSTALL PEDESTRIAN DETECTOR	12.00	EACH		\$	
3090	23157EN		TRAFFIC SIGNAL POLE BASE	35.00	CUYD		\$	
3100	23222EC		INSTALL SIGNAL PEDESTAL	4.00	EACH		\$	
3110	23982EC		INSTALL ANTENNA	2.00	EACH		\$	

**Section: 0014 - WATERLINE**

LINE	BID CODE	ALT	DESCRIPTION	QUANTITY	UNIT	UNIT PRIC	FP	AMOUNT
3120	14002		W AIR RELEASE VALVE SPECIAL	4.00	EACH		\$	
3130	14009		W ENCASMENT STEEL BORED RANGE 4	23.00	LF		\$	
3140	14010		W ENCASMENT STEEL BORED RANGE 5	276.00	LF		\$	
3150	14017		W ENCASMENT STEEL OPEN CUT RANGE 6	341.00	LF		\$	
3160	14019		W FIRE HYDRANT ASSEMBLY	2.00	EACH		\$	
3170	14020		W FIRE HYDRANT RELOCATE	14.00	EACH		\$	
3180	14030		W METER RELOCATE	54.00	EACH		\$	
3190	14036		W PIPE DUCTILE IRON 06 INCH (150 MM)	296.00	LF		\$	
3200	14037		W PIPE DUCTILE IRON 08 INCH (200 MM)	125.00	LF		\$	
3210	14039		W PIPE DUCTILE IRON 12 INCH (300 MM)	8,583.00	LF		\$	
3220	14040		W PIPE DUCTILE IRON 16 INCH (400 MM)	1,939.00	LF		\$	
3230	14042		W PIPE DUCTILE IRON 24 INCH (600 MM)	9,915.00	LF		\$	
3240	14055		W PIPE DUCTILE IRON SPECIAL (600 MM)	394.00	LF		\$	
3250	14074		W PLUG EXISTING MAIN	31.00	EACH		\$	
3260	14081		W SERVICE RELOCATE	55.00	EACH		\$	
3270	14084		W SERV PE/PLST SHORT SIDE 2 IN	1.00	EACH		\$	
3280	14094		W TIE-IN 06 INCH (150 MM)	5.00	EACH		\$	
3290	14095		W TIE-IN 08 INCH (200 MM)	3.00	EACH		\$	
3300	14097		W TIE-IN 12 INCH (300 MM)	11.00	EACH		\$	
3310	14098		W TIE-IN 16 INCH (400 MM)	2.00	EACH		\$	

**PROPOSAL BID ITEMS**

REVISED ADDENDUM #4: 11-19-15

151265

Page 10 of 10

Report Date 11/19/15

LINE	BID CODE	ALT	DESCRIPTION	QUANTITY	UNIT	UNIT PRIC	FP	AMOUNT
3320	14098		W TIE-IN 16 INCH (400 MM)	10.00	EACH		\$	
3330	14100		W TIE-IN 24 INCH (600 MM)	1.00	EACH		\$	
3340	14105		W VALVE 06 INCH (150 MM)	6.00	EACH		\$	
3350	14106		W VALVE 08 INCH (200 MM)	3.00	EACH		\$	
3360	14108		W VALVE 12 INCH (300 MM)	22.00	EACH		\$	
3370	14109		W VALVE 16 INCH (400 MM)	6.00	EACH		\$	
3380	14111		W VALVE 24 INCH (600 MM, MJ GATE)	12.00	EACH		\$	
3390	14139		W PRESSURE REDUCING VALVE 16 INCH (400 MM)	1.00	EACH		\$	

**Section: 0015 - DEMOBILIZATION &/OR MOBILIZATION**

LINE	BID CODE	ALT	DESCRIPTION	QUANTITY	UNIT	UNIT PRIC	FP	AMOUNT
3400	02568		MOBILIZATION	1.00	LS		\$	
3410	02569		DEMOBILIZATION	1.00	LS		\$	